



# STUDENT HAND BOOK

## 2019-2020

### NARULA INSTITUTE OF TECHNOLOGY

NAAC Accredited | NIRF Ranked College

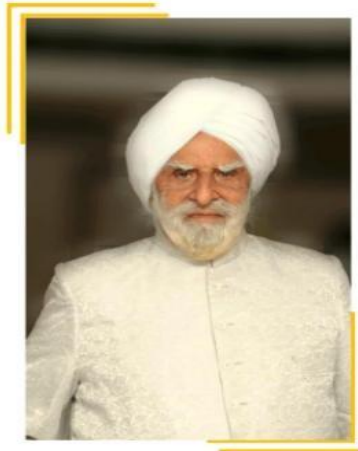


[www.nit.ac.in](http://www.nit.ac.in)

# CONTENT

| SL No. | Particulars                                    | Page No. |
|--------|--|----------|
|        | Our Beloved Babuji: Trailblazer of JIS Group   | 3        |
|        | Welcome Message from Principal                 | 4        |
| 1      | NiT at a Glance                                | 5        |
|        | 1.1 Central Facilities on the campus           | 8        |
|        | 1.2 Hostel Facilities and regulations          | 9        |
|        | 1.3 Central Library Facilities and regulations | 11       |
|        | 1.4 Admission Procedure                        | 13       |
|        | 1.4 Departmental Highlights                    | 16       |
|        | 1.5 Teaching Learning Process                  | 24       |
| 2      | Academic Calendar                              | 25       |
| 3      | Activity Calendar                              | 31       |
| 4      | Induction Programme for First year students    | 42       |
| 5      | Curriculum of Programmes                       | 43       |
| 6      | Student Support Systems                        | 47       |
|        | 6.1 Scholarship Schemes                        | 47       |
|        | 6.2 Mentoring Scheme                           | 49       |
|        | 6.3 Grievance Redressal Mechanism              | 51       |
| 7      | Code of Conduct for Students                   | 54       |
| 8      | Examination System and regulations             | 58       |
| 9      | National and International Collaborations      | 69       |
| 10     | Clubs @ NiT                                    | 74       |
| 11     | Annual Cultural and Sports Activities          | 76       |
| 12     | Directory of NiT                               | 77       |

## *Our Beloved Babuji: Trailblazer of JIS Group*



Sardar Jodh Singh, our beloved Babuji and the founder chairman of JIS Group is the fulcrum of all the endeavours of JIS Group. He had set the roadmap and success pillars of the spearheading educational establishment in eastern India – the JIS GROUP. He was born with a mission to ignite minds and empower lives. He always experienced a yearning to acknowledge his responsibilities and reciprocate by contributing to the growth and development of our society. The twenty-five institutions under JIS Group offers a wide spectrum of Undergraduate and Postgraduate programs ranging from Engineering and Technology, Computer Applications to Dental Science, Pharmacy, Hospitality along with Business Administration and Management .Today thousands of students pursue higher education in JIS Group of colleges and become successful and responsible global citizens. At JIS Group, we constantly strive to create an effective academic platform which can lead social, cultural, scientific, economic and technological reforms in our nation.

All the feathers of success we achieved are the result of blessings and good wishes of our beloved Late Babuji. His benevolence and philanthropy teaches us to illuminate the student community with the ray of education.

## *Message from Principal*



At the onset I take this privilege to welcome you all at Narula Institute of Technology. I appreciate your choice to join this institute. Nit believes in equitable education and thus the students are always exposed to a quality teaching-learning interactive platform. I sincerely hope that you shall be able to continue NiT's longstanding tradition of excellence and achievement. We believe that one of the best ways to discover yourself and who you want to be; is through a liberal technical education. Through your association with the dedicated and distinguished faculty and staff members, you will gain the opportunity to broaden your understanding and develop your talents. We apply innovative teaching methods which will provide an opportunity to learn beyond the classrooms and understand the world around you better. In this present pandemic situation, the academic environment is going through a revolutionary paradigm shift, however here at NiT we have an extraordinary support system that will help you to overcome the challenges. As an undergraduate student we shall encourage you to realize your potentials which will assist you in developing personal and academic goals. I once again warmly greet and value your positive energy and expect to meet you personally in the days ahead. We value your presence in our campus and look forward towards a fruitful teaching-learning.

Stay safe and be focussed.

**Prof. Dr. Maitreyi Ray (Kanjilal)**

**Principal**

## *NiT at a Glance*

Narula Institute of Technology, under the aegis of JIS Group of Institution is one of the leading engineering institutions in the eastern region of the country under the Maulana Abul Kalam University of Technology, West Bengal. NiT was established as a philanthropic initiative of Founding Chairman, Sardar Jodh Singh in the year 2001. NiT has been awarded the accreditation from the National Accreditation & Assessment Council (NAAC).

The four year B.Tech course is imparted in the streams of CSE, ECE, EE, CE, IT, EIE & ME. The institute provides a brilliant platform for pursuing higher studies through PG courses like M.Tech (CSE, ECE, EE- Power System, CE- Structural Engineering), MBA and MCA. It has expanded to include diploma programs in EE, CE, ME and ECTC under the affiliation of West Bengal State Council of Technical Education.

### **Vision**

To make the Institute excellent in technological education and research by imparting equitable, inclusive, ethical, flexible and multidisciplinary knowledge to budding technologists to serve the society.

### **Mission**

1. To establish continuously improving academic ambience in the Institute in order to prepare the students with beyond curriculum knowledge, creativity, innovation, problem solving abilities, teamwork, communication skills etc. for their holistic development.
2. To collaborate with Institutes of higher education, Professional Societies, R&D and Industrial organizations for continuous improvement of the academic research environment in the Institute and to build a strong Industry-Institute interface.
3. To promote and nurture entrepreneurial and innovative quality of the students providing proper education, training and supportive facilities so that future entrepreneurs emerge with flying colors.
4. To strengthen quality and knowledge-base of faculty through faculty development programs for continuous up gradation to remain in tune with dynamically changing technology.
5. To become a responsible contributor in the socio-economic development of the society through excellence in education and research.

## **Affiliations/ Accreditations**

The institute is affiliated to MAKAUT, WB and the technical courses are approved by AICTE. The Institute has received a prestigious NIRF ranking given by MHRD, Govt of India for the last 4 consecutive years. This year the Institute has ranked in the rank band of 201-250 in the Engineering category. It has NBA accredited degree programmes in Engineering. It also prides itself with the prestigious NAAC accreditation. The institute was deemed worthy of receiving the notable World Bank assisted and MHRD approved TEQIP (phase 2) grant for advancement of Technical education. It has also been deemed eligible for receiving central assistance under recognition of clauses 2(f) and 12(b) under UGC Act.


## **Campus**

The institute boasts of a ragging-free campus and students are encouraged to show no tolerance for ragging. The campus also houses a Women's Cell which specializes in prioritizing safety of female students and staff throughout the campus and is active in cultural, infrastructural and functional levels of the institute's hierarchy.


# Knowing

## Narula Institute of Technology


Established in 2001




26395 sq.mt. Built- up-  
Academic Space




Eastern India 1st Institute with QS  
International Ranking




3000+ Current Students




Courses:  
B.Tech. | M.Tech.  
MCA  
Diploma







Agarpara, Kolkata, West Bengal,  
India




Rankings by MHRD Govt. of India  
since 4 years (2017 to 2020) in Engineering  
Category



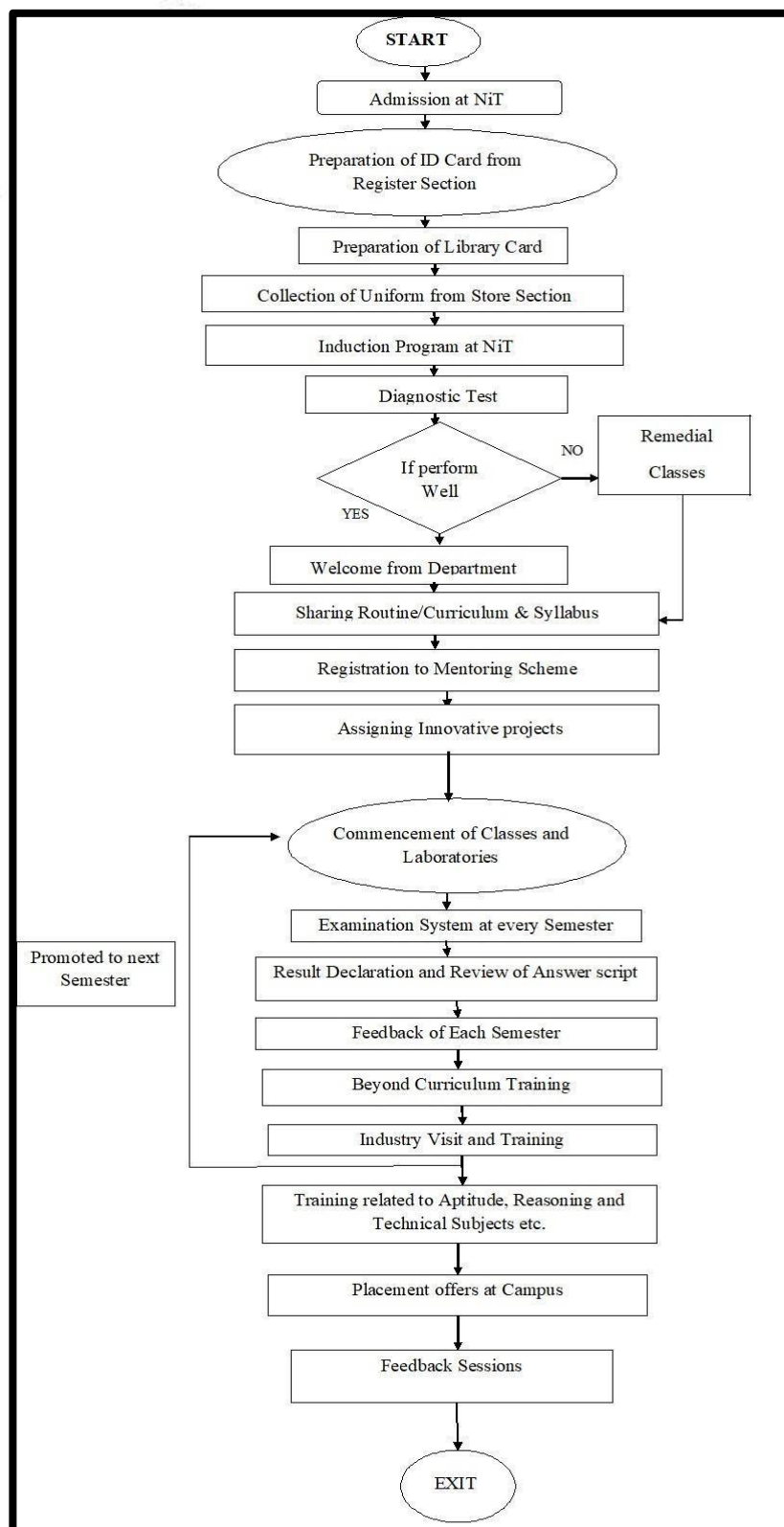
Best Engineering College in East India at  
"National Education Excellence Award 2017"



30000+ Alumni



**Flowchart of “Entry to Exit” for students**





# Central Facilities on the Campus

## Centre of Excellence

The Engineering Institution's credentials enhance the quality of research work and on-going innovative activities. NiT has established various high end Centre of Excellence Laboratories in past years. It includes the Pneumatic and Hydraulic Control Lab by BOSCH & REXROTH. NiT also has high end PCB Design Lab, Internet of Things Lab, Virtual Instrumentation Lab, labs funded by Government and non-government organizations. NiT has Central Computing Lab Facilities spread over an area with a total number of more than 450 computers. Many Government and non- Government examinations organised centrally are held at NiT because of the sophisticated computer facilities. The campus is well-equipped with spacious rooms along with Wi-Fi facilities. Also, there are auditoriums available for the cultural events organised at the campus. The campus includes the conference rooms for the meetings to be conducted by the officials.

## ICT based Smart Rooms

NiT has a great technology of teaching students with the help of the latest ICT based tools & technology. In the process we have adopted a teaching method by using smart class room teaching technology where in the contexts latest design, animation & other dynamic components can be easily explained. There are 100% class-rooms with all the ICT facilities and computers for interfacing facilities.

## Canteen Facilities and Cafeteria

Canteen facility is an integral part of the campus which provides nutritious homely food to all hostellers, day scholars, faculty & staff members and visitors. It provides 4 meals a day. Quality food is prepared under strict hygienic conditions. The food is served in the dining area keeping all the sensitivities in consideration.

1. All the hostel mess serves Vegetarian/Non- Vegetarian Food only and operates in self-service mode.
2. The menu of the items is designed considering the requirements of the students and nutrition is added to make it healthy and complete.
3. We offer morning tea with regular breakfast, lunch, evening snacks and tea, dinner and milk to all hostellers.
4. The Canteen facility is available in all the campuses of Hostels which comprises a healthy & delicious variety of VEG/NON-VEG snacks & food.

## **Medical Facilities**

1. The college doctor is available from 11:00 a.m. - 2:00 p.m. on the weekdays for the students and faculties and staff.
2. Whenever needed, hoteliers may utilize medical services provided at the SAGAR DUTTA MEDICAL COLLEGE AND HOSPITAL.
3. The medical counselor is available twice a week (on Tuesdays & Thursdays) from 1:30 p.m.- 3:30 p.m.

## **Sports and Gymnasium facilities**

1. There is a wide playground available within the college campus.
2. Students can play any of the outdoor sports like: cricket, football, volleyball, badminton, handball etc.
3. Also there are boys and girls common rooms with indoor games facilities like: ludo, carom, table tennis, and chess.
4. A well-spaced Yoga Centre is also available for the students.
5. Some of the sports facilities are also available in girls and boys hostels.

## Hostel Facilities and Regulations

NIT Hostels is A Home Away from Home is a hub of academic, sports, cultural and social activities. It is said that home is sweet. But even then life at home cannot be compared to life in a hostel.

NIT provides separate hostels for boys and girls.

Each hostel has spacious and semi furnished rooms offering a pleasant environment. The hostels are well-equipped with spacious rooms along with other facilities like: Wi-Fi, water purifier, water cooler and provision for indoor as well as outdoor games. These hostels also have home like dining facilities that offer fresh & nutritious food to the students. Hostels give an environment to create the most effective conditions for student development. The hostels are located both within the campus and off the campus thus offering secured abodes. Hostel also provides transportation at fixed timings to maintain security. The hostel is designed in such a way as to provide optimum utilization of student's time for their overall personality development.

### Hostel Regulations

THE STUDENT who wishes to reside in the hostel is not allowed to leave the hostel during the MID-SESSION except in the case if he/she has been expelled from the hostel on account of disciplinary action / misconducts / short attendance etc.

1. Hostel Fee is NON REFUNDABLE except Caution Money. In case the student has been expelled from the Hostel on account of disciplinary action / misconducts / short attendance etc. his/her hostel fee and Hostel Caution Money will automatically be forfeited. No claim for any kind of refund will be entertained.
2. No hosteller will be permitted to continue to occupy a hostel room, unless he / she pays hostel dues within stipulated time. Any delay in payment of dues will attract fines as per rules.
3. Use of intoxicants (Alcohols and drugs) and smoking is strictly prohibited by law.
4. Ragging is strictly prohibited by law. Any hosteller found indulging himself / herself directly / indirectly in disciplinary activities like theft case / ragging / fighting / quarrelling / use of abusive language / misbehave with fellow students, juniors / seniors within campus or with outsiders at public places and also with Staff members, the disciplinary action shall be initiated against him / her as deemed necessary or may be handed over to police for legal proceedings according to nature of offence for which entire responsibility lies on the concerned hosteller.
5. The hosteller is required to follow the Mess timings & Mess Regulations meticulously.
6. No hosteller is allowed to use a stove, heater, iron, cooler, immersion rod etc. unless specifically permitted by the competent authority.

7. The Hosteller is expected to avail facilities provided for personality development and enhancement of Professional skills & knowledge by the University Management.
8. No hosteller will leave COLLEGE or hostel campus, unless he / she obtains out pass issued by concerned hostel Warden and duly recorded in Movement Register available at Main / Hostel Gate.
9. Lodging and boarding facility may be made available for parents on advance booking on payment of Rs.1000/- per room per person per night by concerned hosteller for 2 days only. THIS FACILITY IS AVAILABLE FOR PARENTS ONLY.

## Central Library Facilities and Regulations

NiT Library welcomes all of its student members to use the central library facility at campus. The Library has many reputed International and national author books for utilization by the students. The Central Library includes the International Journals for various engineering domains like IEEE and Springer repositories. It also has magazines from reputed publishers. The students of NiT can issue the book in the following ways, (a) book bank, and (b) reference book. The book bank is issued to the student for the entire semester i.e., three months. And the Reference books are issued for a limited period i.e., 15 days.

In order to ensure a good library-environment, we ask users to abide by the following rules. However, we expect, all members should exercise self-discipline, respect and consideration for others when using the Library.

1. The Library is open to registered members only and the members must hold a valid membership card (Fees Book for 1st Year students) when using the library.
2. Library is open on all working days of the Institute and from 8:00 am– 8:00 pm (Monday to Friday) & 9.30am – 1.30pm. (Saturday). However, the library remains open on request, as per convenience of the students and staff of the Institute.
3. No bags, umbrellas, personal books, CD, etc. may be brought into the library. The library will not accept any responsibility for the loss or misplacement of personal belongings.
4. Consumption of food is not permitted in the library and use of mobile phones is strictly prohibited inside the library.
5. Mutilation of library materials and damage to library materials is a serious offence. Members must report any mutilation or damage that is found in books before borrowing.

6. Every material borrowed from the library must be returned in time. Fines imposed on borrowers for late return of library materials, as follows –  
Rs. 2 per day for each book
7. Borrowers are responsible for the materials borrowed on their cards and are liable to replace the same if the material is found lost or damaged.
8. Users are required to comply with prevalent copyright regulations.
9. Practical work is strictly prohibited in the Library reading room.
10. Maximum 4 students are allowed in each table of the Library Reading Room.
11. Silence must be observed in the library & no discussion permitted inside the library.

# Admission Process of NiT

**NiT offers the following courses:**

## **A. Undergraduate Degree (Full Time)**

1. Mechanical Engineering (ME)- 60 Seats
2. Computer Science & Engineering (CSE) - 180 Seats
3. Electronics & Communication Engineering (ECE)- 150 Seats
4. Information Technology (IT) - 120 Seats
5. Electrical Engineering (EE) - 120 Seats
6. Civil Engineering (Civil) - 60 Seats
7. Electronics & Instrumentation Engineering (EIE) - 30 Seats

## **B. Postgraduate Degree (Full Time)**

1. Computer Science & Engineering (CSE) - 18 Seats
2. Electronics & Communication Engineering - 12 Seats
3. Electrical Engineering -Power Systems - 12 Seats
4. Civil Engineering - Structural Engineering - 30 Seats
5. Master of Computer Application (MCA) -60 seats

## **C. Diploma (Full Time)- 3 years**

1. Electronics & Telecommunication Engineering (ETCE) -30 seats
2. Civil Engineering (CE)-30 seats
3. Electrical Engineering (EE)-60 seats
4. Mechanical (ME)-60 seats

### **Registration Process for Application:**

1. Click on “Application for Admission : Apply Now”
2. Then Click on “ 1. New Registration”
3. Enter Name (in Capital), Valid Mobile No., Valid email id
4. An OTP will send on given Mobile No and email id
5. Put the OTP and click on “ Save and Continue”
6. An application Id and Password will be generated and same will be sent to the given email id
7. Click on “Next” (if logged out then click on “Continue Partially Filled form 2021” then put application Id and Password.

### **Application Form Fill up:**

1. Fill ‘Course Details’, ‘Personal Details’, ‘Family Details’, Academic Details’ accordingly and then ‘Upload’ the required documents as per specified format and size and submit the application form.

### **Final Admission Process:**

1. Admission offer will be sent after successfully verification of the uploaded documents
2. Log in again to accept the admission offer (Refresh if already logged in)
3. After accepting the admission offer college will activate the “Payment Option”
4. Then click on the “Proceed to Pay” and pay the requisite fees for admission.

# Departmental Highlights

## 1. The Dept. of Computer Science Engineering (CSE)

**About the Department:** Today we find that information technology has become overwhelmingly pervasive, while its parent, computing science, has become correspondingly hard to find. While many Computer Science educational institutions have shifted focus from core Computer Science and become specialty providers for the IT industry while our department has remained true to the vision on which it was founded.

There are several ways to present the canonical core of computer science. Over the years we have developed a distinct style and method that bridges the theory – practice divide while remaining grounded in the core.

Our Department has produced hundreds of professionals and has established a name for itself in the country and abroad. They have consistently excelled in the highly competitive industrial environment, Best Employer in top-ranking companies. I attribute this success to the winning combination of a dedicated and experienced faculty that works hard at imparting quality education, a well-planned syllabus and last but not least, our sincere students.

We believe that this approach to teaching-learning, coupled with practical experience gained during Industrial Training in reputed organizations, equips our students to handle the challenges posed by the software industry. I am confident that our students will prove themselves worthy for any organization or institute.

**Head of the Department:** Prof.. Jayanta Pal, Email: [head\\_cse.nit@jisgroup.org](mailto:head_cse.nit@jisgroup.org)

**Infrastructure Facilities:** <https://www.nit.ac.in/computer-science-engineering.php>

**For more information see the departmental website:** <https://www.nit.ac.in/computer-science-engineering.php>



## 2. The Dept. of Electronics and Communication Engineering (ECE)

**About the Department:** Electronics and Communication Engineering (ECE) offers four years full time B. TECH program in ECE. The course is accredited by NBA. The average passing result is excellent in the department. Almost 10-15% of students scored above 9 DGPA. Apart from this we are running P.G. Programs, M.TECH. in Electronics & Communication Engineering since 2009 and we also offer Electronics & Communication Engineering Diploma courses in Kolkata since 2015. The department of ECE offers premier professional technical training that keeps in pace with the latest developments in the field of Electronics and Communication Engineering. The department organized so many International & National Educational Programs (i.e. IEEE sponsored Seminars, Workshops, Faculty Development Programs and one day educational Industrial tours). There are so many events like Paper presentation, Poster presentation, Technical Quiz contest, Technical Report writing Contest & Technical Workshop cum contest associated with IIT, Bombay are organized for the students by this department. There are more than 500 publications done by the faculty & students in National & International Journals & Conferences. Furthermore, five MODROB Projects sponsored by AICTE are completed, fourteen national patents are published by our faculty and staff members, two RPS, two UGC sponsored minor projects and other two projects sponsored by JIS GROUP are going on in this department. Many of our Alumni are settled abroad and also many of the students are placed in so many reputed Govt. sectors and Private Sectors Company and Research Organizations. There is so many high valued simulation software is present in our department like Tanner SPICE, CADENCE, Matlab 2014b, Visual TCAD, HFSS, Qualnet, Active HDL, MPLS, Altera Quartus II, TMS Kit with Code Composer Studio etc. We have a PCB design Laboratory with a full set up sponsored by AICTE.

**Head of the Department:** Dr. Saradindu Panda, Email: [head\\_ece.nit@jisgroup.org](mailto:head_ece.nit@jisgroup.org)

**Infrastructure Facilities:** <https://www.nit.ac.in/electronics-communication-engineering.php>

**For more information see the departmental website:** <https://www.nit.ac.in/electronics-communication-engineering.php>

### 3. The Dept. of Information Technology (IT)

**About the Department:** The Information Technology Department of this premier Institute equips the students with practical based knowledge modelled upon developments in software technology and its application in the relevant fields, both traditional and emerging. The students gain industry-oriented knowledge for their preparation to meet the demands in the competitive market. The conventional theoretical lessons are backed by ample laboratory practices.

We guide the students in the proper direction amidst an atmosphere of open mind-set to make them inquisitive about the emerging technologies with sufficient theoretical and practical training enabling them to readily adapt themselves in the global market.

The I.T. infrastructure present at NIT consists of state-of-art Computer Labs with high speed internet connection. A total of 15,000 sq. ft. has been used for creating these LABs, which provide students with adequate practical experiences and a dedicated internet connection for knowledge enhancement and research. In recognition of this robust and structured computing facility, major leading firms/bodies, including TCS, Co-Cubes, leading Banks /AIEEE, make use of this infrastructure for their online recruitment exams.

Professional liaison with leading Training and Research Institutes of the country are maintained for fruitful collaborations in emerging trends in the area of Information Technology.

NIT maintains constant communication with all leading companies in order to assess their needs in terms of manpower and know-how for better placement of students. We endeavour for an all-round development of the students including academic competence, leadership and personality, so that they acquire the traits of not only a highly skilled professional, but also that of a responsible citizen.

**Head of the Department:** Dr. Bidyut K. Medya, Email: [head\\_it.nit@jisgroup.org](mailto:head_it.nit@jisgroup.org)

**Infrastructure Facilities:** <https://www.nit.ac.in/information-technology.php>

**For more information see the departmental website:** <https://www.nit.ac.in/information-technology.php>

## 4. The Dept. of Electrical Engineering (EE)

### About the Department:

The Electrical Engineering Department started the B.Tech EE programme in the year 2002 and was accredited by NBA in the year 2008. The Electrical Engineering Department started the M.Tech. (Power System) programme in 2010 and was accredited by NBA in the year 2016. The department received institutional NAAC Accreditation in 2014. The UGC conferred Autonomy to the institute and the department in 2015. Department also received institutional NIRF Ranking in 2016 and 2017 as among 3 Best Private Engineering Colleges of West Bengal.

Presently our sanctioned intake for B.Tech. course is 120. We have the distinction of one of our students securing a place in the first ten positions of West Bengal University of Technology in 2007. One of our students secured 125th all India Rank in GATE 2011 and secured 89th all India Rank in GATE 2014. Our students have been placed in IOCL, BHEL, POWERGRID, CESC, Reliance, L&T, Tata Consulting Engineers, TATA Motors, Electricity Utilities of various State Governments and numerous electrical project companies. Some of our students are pursuing higher studies in US Universities and some are also pursuing Ph.D. Our Faculty members consistently upgrade their knowledge by attending various training programs and participate in numerous National and International Conferences to present and publish Research Papers. Our faculty members have published Research Papers in Refereed International Journals with high impact factor and published latest technology books with reputed publishers.

We regularly organize Technology as well as Industry Seminars on current topics which are open to participation by Students and Faculty members. We regularly conduct Industrial Visits for students as well as faculty members.

**Head of the Department:** Dr. Nabamita Bannerjee, Email: [head\\_ee.nit@jisgroup.org](mailto:head_ee.nit@jisgroup.org)

**Infrastructure Facilities:** <https://www.nit.ac.in/electrical-engineering.php>

**For more information see the departmental website:** <https://www.nit.ac.in/electrical-engineering.php>

## 5. The Dept. of Civil Engineering (CE)

### About the Department:

The Civil Engineering department is a vibrant department due to our academic and staff members as well as our bright students. Our faculties come from highly respectable universities and industries with specialized knowledge that runs the gamut of civil and construction engineering ranging from geotechnical engineering to structural and construction management to transportation engineering to water and environmental engineering etc. We have excellent lab facilities which can be considered as one of the best in the country. Civil engineers build bridges, roads, canals, dams, high-rise buildings and other large structures. Civil engineering is traditionally broken into several sub-disciplines including structural engineering, dealing with analysis and design of structures, geotechnical engineering dealing with analysis and design of foundation of various structures and soil related problems, water resource engineering dealing with analysis of water potential, design of hydraulic structures and allocation of water for various sectoral uses, environmental engineering dealing with water treatment for safe water supply to urban and rural areas and waste water treatments for pollution hazards, transportation engineering dealing with analysis and design of roads, railways, airports and harbours, surveying dealing with mapping and setting out works and construction engineering dealing with construction materials, construction and maintenance of various structures. Civil engineers use computers for analysis, design and construction, new technologies like remote sensing, intelligent buildings, intelligent transportation systems, green buildings, managerial skills for managing resources and structures, communication skills for better understanding with people etc. The department of civil engineering fulfils the requirements of equipping the students with all aspects of civil engineering mentioned above and face the real world with confidence and Narula Institute of Technology is the perfect choice for students that want to pursue B.Tech and Diploma in civil engineering and MTech in Structural Engineering in Kolkata.

**Head of the Department:** Dr. Biman Mukherjee,

Email: [head\\_ce.nit@jisgroup.org](mailto:head_ce.nit@jisgroup.org)

**Infrastructure Facilities:** <https://www.nit.ac.in/civil-engineering.php>

**For more information, see the departmental website:**

<https://www.nit.ac.in/civil-engineering.php>

## 6. The Dept. of Mechanical Engineering (ME)

### **About the Department:**

The Mechanical Engineering department comprises distinguished faculty members and highly efficient technical staff who are actively involved with the students in guiding and preparing them for a bright future. Although the Mechanical Engineering Department at NiT is young, our driving mission is to prepare students for a rapidly evolving and complex world. With the NiT slogan "HOW TO THINK NOT WHAT TO THINK", we continue to be committed to core values of building on strong foundations to foster a culture of innovation within a dynamic, vital and engaging intellectual environment. Our laboratories are very well established and consist of state-of-the-art facilities to motivate students to learn beyond the syllabus which definitely develops complete knowledge of the subject (both the practical and theoretical depth of knowledge) and develop skill sets of students to become promising engineers in future. The JIS Bosch Centre of Excellence on Fluid Power Control Systems has been set up to cater to the needs of research and training for faculties, students and researchers. I would like to conclude with the words of Thomas Friedman who has rightly said "World is flat and opportunities are immense. It's just a question of identifying opportunities and making the best of them". I wish all the best to the students.

**Head of the Department:** Dr. Sumit Chabri,

Email: [head\\_me.nit@jisgroup.org](mailto:head_me.nit@jisgroup.org)

**Infrastructure Facilities:** <https://www.nit.ac.in/mechanical-engineering.php>

**For more information see the departmental website:**

<https://www.nit.ac.in/mechanical-engineering.php>

## 7. The Dept. of Electronics and Instrumentation Engineering (EIE)

**About the Department:** The Electronics and Instrumentation Engineering department is the most innovative department of Narula Institute of Technology. The department has started its journey from 2010 and offers the B. Tech degree in Electronics and Instrumentation Engineering. The subject is the amalgam of both the software and core subjects. So, the department is very successful in offering placements in both sectors for the entire pass out students. The department is very competent to execute innovative projects and won many project competitions in and around West Bengal. Our faculties have high national and international exposures and have more than 100 research publications. The students of EIE Department have published more than 70 research papers till date. The department is much focused on providing quality technical knowledge, enhancing project based technical skills and making them industry ready both for software and core sectors. Narula Institute of Technology is the best college for B.Tech in Electronics and Instrumentation Engineering in Kolkata.

**Head of the Department:** Prof. Bansari Deb Majumder,  
Email: [head\\_eie.nit@jisgroup.org](mailto:head_eie.nit@jisgroup.org)

**Infrastructure Facilities:** <https://www.nit.ac.in/electronics-instrumentation-engineering.php>

**For more information see the departmental website:** <https://www.nit.ac.in/electronics-instrumentation-engineering.php>

## 8. The Dept. of Basic Science and Humanities

### About the Department:

The Basic Science and Humanities department (BS & HU) comprises Physics, Chemistry, Mathematics and English. The department is committed to achieve academic excellence in teaching and scholarly endeavours, as well as serving the academic community and the public at large with highly qualified faculty members. It aims to provide a comprehensive knowledge of Mathematics, Physics, Chemistry and English to the engineering students with a view to enrich the students' understanding towards their core subjects. This will help them in encountering practical problems in their engineering careers, keeping a balance between applications and the basic principles behind them. The department has excellent faculty members with international fame. All the faculty members attend and present papers in International and National conferences regularly in India. Some of the faculty members attended International conferences in different countries like Germany, Poland, Hungary, Czech Republic, China, Sri Lanka, Lithuania, Bulgaria, Spain. Total journal publication of this department is nearly 200 and conference presented papers are nearly 250. The department organizes seminar, model competition, project fair, powerpoint presentation competition for the students as well as arranges expert lectures from different fields. The department publishes a departmental Newsletter "Illumination" which contains all the departmental events and faculty achievements. There is also a separate Departmental Library apart from the Central Library which facilitates knowledge building for the faculty members.

**Head of the Department:** Dr. Sumit Nandi,

Email: [head\\_bshu.nit@jisgroup.org](mailto:head_bshu.nit@jisgroup.org)

**Infrastructure Facilities:** <https://www.nit.ac.in/basic-science-humanities.php>

**For more information see the departmental website:** <https://www.nit.ac.in/basic-science-humanities.php>

# Teaching Learning Process

Narula Institute of Technology - Kolkata is widely known as a top engineering college in West Bengal, for its focus on student centric teaching and learning processes. We are committed to the pursuit of excellence and take great pride in the accomplishments of our students. Our pride is not just saying; it is an approach for learning and growth that will last a lifetime. Teaching methodologies of NiT are designed in such a way that helps the students to develop their skills through hands-on experience. Our students and faculty members interact regularly with industry, academic and various government organizations. Teaching methodologies mostly focused on Live Projects, Guest Lectures, Seminars, Workshops, Group Assignments, Discussion, Brainstorming, Role Play, Emphasis on practical, Case Studies, etc.

## Smart Room Teaching Technology

NiT has a great technology of teaching students with the help of the latest tools & technology. In the process we have adopted a teaching method by using smart class room teaching technology where in the contexts latest design, animation & other dynamic components can be easily explained.

## Emphasis of Practical Learning

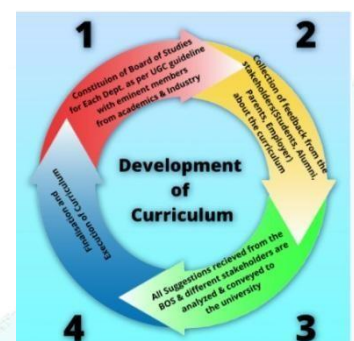
The purpose of practical classes are to guide and familiarize students with working life situations that help them to apply acquired practical knowledge and skills at the workplace. Special assessments and reflection sessions are arranged by the NiT during the practical session in order to assess the students' learning.

## Live Projects

Our teaching methodologies put a lot of stress on live projects which provides an opportunity to students to acquire and represent the capabilities of up to date thoughts and knowledge as per requirement of real world.

## Curriculum Development

The Curriculum of all the disciplines are revised periodically by taking the feedback from the Academicians, industry personnel and distinguished alumni members.





# Academic Calendar

## Odd Semester 2019 [July to December]

| Day | Month                 | Day       | Routine Activity( 2 <sup>nd</sup> , 3 <sup>rd</sup> & 4 <sup>th</sup> Year) | Routine Activity ( 1 <sup>st</sup> Year ) | Particulars  |
|-----|-----------------------|-----------|---|---|--|
| 1   | 1 <sup>st</sup> July  | Monday    |   |   | Semester Break / FDP   |
| 2   | 2 <sup>nd</sup> July  | Tuesday   |   |   | Semester Break / FDP   |
| 3   | 3 <sup>rd</sup> July  | Wednesday |   |   | Semester Break / FDP   |
| 4   | 4 <sup>th</sup> July  | Thursday  |   |   | Semester Break / FDP   |
| 5   | 5 <sup>th</sup> July  | Friday    |   |   | Semester Break / FDP   |
| 6   | 6 <sup>th</sup> July  | Saturday  | Weekly off  | Weekly off                                | Weekly off   |
| 7   | 7 <sup>th</sup> July  | Sunday    | Weekly off  | Weekly off                                | Weekly off   |
| 8   | 8 <sup>th</sup> July  | Monday    | Teaching Day 01   |   | Commencement of Ongoing Semester<br>Students Training (3 <sup>rd</sup> and 5 <sup>th</sup> Semester)<br>Registration ongoing batch |
| 9   | 9 <sup>th</sup> July  | Tuesday   | Teaching Day 02   |   | Students Training (3 <sup>rd</sup> and 5 <sup>th</sup> Semester)<br>Registration ongoing batch]                                    |
| 10  | 10 <sup>th</sup> July | Wednesday | Teaching Day 03   |   | Students Training (3 <sup>rd</sup> and 5 <sup>th</sup> Semester)<br>Monthly Review Meeting for the month of June 2019              |
| 11  | 11 <sup>th</sup> July | Thursday  | Teaching Day 04   |   | Registration ongoing batch<br>Students Training (3 <sup>rd</sup> and 5 <sup>th</sup> Semester)                                     |
| 12  | 12 <sup>th</sup> July | Friday    | Teaching Day 05   |   | Registration ongoing batch<br>Students Training (3 <sup>rd</sup> and 5 <sup>th</sup> Semester)                                     |
| 13  | 13 <sup>th</sup> July | Saturday  | Weekly off  | Weekly off                                | Weekly off   |
| 14  | 14 <sup>th</sup> July | Sunday    | Weekly off  | Weekly off                                | Weekly off   |
| 15  | 15 <sup>th</sup> July | Monday    | Teaching Day 06   |   | Registration ongoing batch<br>Students Training (3 <sup>rd</sup> and 5 <sup>th</sup> Semester)                                     |
| 16  | 16 <sup>th</sup> July | Tuesday   | Teaching Day 07   |   | Registration ongoing batch<br>Students Training (3 <sup>rd</sup> and 5 <sup>th</sup> Semester)                                     |
| 17  | 17 <sup>th</sup> July | Wednesday | Teaching Day 08   |   | Registration ongoing batch<br>Students Training (3 <sup>rd</sup> and 5 <sup>th</sup> Semester)                                     |
| 18  | 18 <sup>th</sup> July | Thursday  | Teaching Day 09   |   | Registration ongoing batch<br>Students Training (3 <sup>rd</sup> and 5 <sup>th</sup> Semester)                                     |
| 19  | 19 <sup>th</sup> July | Friday    | Teaching Day 10   |   | Registration ongoing batch<br>Students Training (3 <sup>rd</sup> and 5 <sup>th</sup> Semester)                                     |
| 20  | 20 <sup>th</sup> July | Saturday  | Weekly off  | Weekly off                                | Weekly off   |
| 21  | 21 <sup>st</sup> July | Sunday    | Weekly off  | Weekly off                                | Weekly off   |

|    |                       |           |                 |                 |  |
|----|-----------------------|-----------|-----------------|-----------------|--|
| 22 | 22 <sup>nd</sup> July | Monday    | Teaching Day 11 |                 |  |
| 23 | 23 <sup>rd</sup> July | Tuesday   | Teaching Day 12 |                 |  |
| 24 | 24 <sup>th</sup> July | Wednesday | Teaching Day 13 |                 |  |
| 25 | 25 <sup>th</sup> July | Thursday  | Teaching Day 14 |                 | Distribution of project to students  |
| 26 | 26 <sup>th</sup> July | Friday    | Teaching Day 15 |                 | Distribution of project to students  |
| 27 | 27 <sup>th</sup> July | Saturday  | Weekly off      | Weekly off      | Weekly off   |
| 28 | 28 <sup>th</sup> July | Sunday    | Weekly off      | Weekly off      | Weekly off   |
| 29 | 29 <sup>th</sup> July | Monday    | Teaching Day 16 |                 |  |
| 30 | 30 <sup>th</sup> July | Tuesday   | Teaching Day 17 |                 |  |
| 31 | 31 <sup>st</sup> July | Wednesday | Teaching Day 18 | Teaching Day 1  | Commencement of Academic Session for New Batch<br>Induction Program for New Batch    |
| 32 | 1 <sup>st</sup> Aug   | Thursday  | Teaching Day 19 | Teaching Day 2  | Induction Program for New Batch  |
| 33 | 2 <sup>nd</sup> Aug   | Friday    | Teaching Day 20 | Teaching Day 3  | Induction Program for New Batch  |
| 34 | 3 <sup>rd</sup> Aug   | Saturday  | Weekly off      | Teaching Day 4  | Induction Program for New Batch  |
| 35 | 4 <sup>th</sup> Aug   | Sunday    | Weekly off      | Weekly off      | Weekly off   |
| 36 | 5 <sup>th</sup> Aug   | Monday    | Teaching Day 21 | Teaching Day 5  | Induction Program for New Batch  |
| 37 | 6 <sup>th</sup> Aug   | Tuesday   | Teaching Day 22 | Teaching Day 6  | Induction Program for New Batch  |
| 38 | 7 <sup>th</sup> Aug   | Wednesday | Teaching Day 23 | Teaching Day 7  | Induction Program for New Batch<br>Monthly Review Meeting for the month of July 2019 |
| 39 | 8 <sup>th</sup> Aug   | Thursday  | Teaching Day 24 | Teaching Day 8  | Induction Program for New Batch  |
| 40 | 9 <sup>th</sup> Aug   | Friday    | Teaching Day 25 | Teaching Day 9  | Induction Program for New Batch  |
| 41 | 10 <sup>th</sup> Aug  | Saturday  | Weekly off      |                 |  |
| 42 | 11 <sup>th</sup> Aug  | Sunday    | Weekly off      |                 |  |
| 43 | 12 <sup>th</sup> Aug  | Monday    | Holiday         |                 | Id-UI-Zoha   |
| 44 | 13 <sup>th</sup> Aug  | Tuesday   | Teaching Day 26 | Teaching Day 10 | Induction Program for New Batch  |
| 45 | 14 <sup>th</sup> Aug  | Wednesday | Teaching Day 27 | Teaching Day 11 | Induction Program for New Batch  |
| 46 | 15 <sup>th</sup> Aug  | Thursday  | Holiday         |                 | Independence Day   |
| 47 | 16 <sup>th</sup> Aug  | Friday    | Teaching Day 28 | Teaching Day 12 | Induction Program for New Batch  |
| 48 | 17 <sup>th</sup> Aug  | Saturday  | Weekly off      |                 |  |
| 49 | 18 <sup>th</sup> Aug  | Sunday    | Weekly off      |                 |  |
| 50 | 19 <sup>th</sup> Aug  | Monday    | Teaching Day 29 | Teaching Day 13 | Induction Program for New Batch  |
| 51 | 20 <sup>th</sup> Aug  | Tuesday   | Teaching Day 30 | Teaching Day 14 | Induction Program for New Batch  |
| 52 | 21 <sup>st</sup> Aug  | Wednesday | Teaching Day 31 | Teaching Day 15 | Induction Program for New Batch  |
| 53 | 22 <sup>nd</sup> Aug  | Thursday  | Teaching Day 32 | Teaching Day 16 | Induction Program for New Batch  |
| 54 | 23 <sup>rd</sup> Aug  | Friday    | Holiday         |                 | Janmashtami  |
| 55 | 24 <sup>th</sup> Aug  | Saturday  | Weekly off      |                 |  |
| 56 | 25 <sup>th</sup> Aug  | Sunday    | Weekly off      |                 |  |
| 57 | 26 <sup>th</sup> Aug  | Monday    | Teaching Day 33 | Teaching Day 17 |  |

|    |                       |           |                         |                 |   |
|----|-----------------------|-----------|-------------------------|-----------------|---|
| 58 | 27 <sup>th</sup> Aug  | Tuesday   | Teaching Day 34         | Teaching Day 18 | [Distribution of Topic for Debate/PPT/GD ]  |
| 59 | 28 <sup>th</sup> Aug  | Wednesday | Teaching Day 35         | Teaching Day 19 |   |
| 60 | 29 <sup>th</sup> Aug  | Thursday  | Teaching Day 36         | Teaching Day 20 |   |
| 61 | 30 <sup>th</sup> Aug  | Friday    | Teaching Day 37         | Teaching Day 21 |   |
| 62 | 31 <sup>st</sup> Aug  | Saturday  | Weekly off / Activities |                 | Seminar –CSE,IT & CA ,<br>Juridical Science   |
| 63 | 1 <sup>st</sup> Sept  | Sunday    | Weekly off              |                 |   |
| 64 | 2 <sup>nd</sup> Sept  | Monday    | Teaching Day 38         | Teaching Day 22 |   |
| 65 | 3 <sup>rd</sup> Sept  | Tuesday   | Teaching Day 39         | Teaching Day 23 |   |
| 66 | 4 <sup>th</sup> Sept  | Wednesday | Teaching Day 40         | Teaching Day 24 |   |
| 67 | 5 <sup>th</sup> Sept  | Thursday  | Teaching Day 41         | Teaching Day 25 | Submission of Q paper-Unit Test 1]<br>Distribution 1 <sup>st</sup> Project]           |
| 68 | 6 <sup>th</sup> Sept  | Friday    | Teaching Day 42         | Teaching Day 26 | Submission of Q paper-Unit Test 1<br>Monthly Review Meeting for the month of Aug 2019 |
| 69 | 7 <sup>th</sup> Sept  | Saturday  | Weekly off / Activities |                 | Seminar –EE ,ECE ,EIE, BA<br>Seminar-Pharmaceutical Science                           |
| 70 | 8 <sup>th</sup> Sept  | Sunday    | Weekly off              |                 |   |
| 71 | 9 <sup>th</sup> Sept  | Monday    | Teaching Day 43         | Teaching Day 27 |   |
| 72 | 10 <sup>th</sup> Sept | Tuesday   | Holiday                 | Muhharam        | Muhharam  |
| 73 | 11 <sup>th</sup> Sept | Wednesday | Teaching Day 44         | Teaching Day 28 |   |
| 74 | 12 <sup>th</sup> Sept | Thursday  | Teaching Day 45         | Teaching Day 29 | 1 <sup>st</sup> Unit Test   |
| 75 | 13 <sup>th</sup> Sept | Friday    | Teaching Day 46         | Teaching Day 30 | 1 <sup>st</sup> Unit Test   |
| 76 | 14 <sup>th</sup> Sept | Saturday  | Teaching Day 47         | Teaching Day 31 | 1 <sup>st</sup> Unit Test   |
| 77 | 15 <sup>th</sup> Sept | Sunday    | Weekly off              |                 |   |
| 78 | 16 <sup>th</sup> Sept | Monday    | Teaching Day 48         | Teaching Day 32 |   |
| 79 | 17 <sup>th</sup> Sept | Tuesday   | Teaching Day 49         | Teaching Day 33 |   |
| 80 | 18 <sup>th</sup> Sept | Wednesday | Holiday                 |                 | Viswakarma Puja   |
| 81 | 19 <sup>th</sup> Sept | Thursday  | Teaching Day 50         | Teaching Day 34 |   |
| 82 | 20 <sup>th</sup> Sept | Friday    | Teaching Day 51         | Teaching Day 35 |   |
| 83 | 21 <sup>st</sup> Sept | Saturday  | Weekly off / Activities |                 | Seminar –BS&H, Geology, Education   |
| 84 | 22 <sup>nd</sup> Sept | Sunday    | Weekly off              |                 |   |
| 85 | 23 <sup>rd</sup> Sept | Monday    | Teaching Day 52         | Teaching Day 36 |   |

|     |                       |           |                           |                      |   |
|-----|-----------------------|-----------|---------------------------|----------------------|---|
| 86  | 24 <sup>th</sup> Sept | Tuesday   | Teaching Day 53           | Teaching Day 37      | [Distribution of Answer script- 1 <sup>st</sup> Unit Test]                |
| 87  | 25 <sup>th</sup> Sept | Wednesday | Teaching Day 54           | Teaching Day 38      | [Distribution of Answer script- 1 <sup>st</sup> Unit Test]                |
| 88  | 26 <sup>th</sup> Sept | Thursday  | Teaching Day 55           | Teaching Day 39      | [Distribution of Answer script- 1 <sup>st</sup> Unit Test]                |
| 89  | 27 <sup>th</sup> Sept | Friday    | Teaching Day 56           | Teaching Day 40      | [1 <sup>st</sup> Unit Test Result]<br>[1 <sup>st</sup> review of Project] |
| 90  | 28 <sup>th</sup> Sept | Saturday  | Holiday                   |                      | Mahalaya  |
| 91  | 29 <sup>th</sup> Sept | Sunday    | Weekly off                |                      |   |
| 92  | 30 <sup>th</sup> Sept | Monday    | Teaching Day 57           | Teaching Day 41      | [Innovative Idea Proposal Submission at Dept]                             |
| 93  | 1 <sup>st</sup> Oct   | Tuesday   | Teaching Day 58           | Teaching Day 42      |   |
| 94  | 2 <sup>nd</sup> Oct   | Wednesday | Holiday                   | Birthday of Gandhiji | Birthday of Gandhiji  |
| 95  | 3 <sup>rd</sup> Oct   | Thursday  | Day off                   | Day off              | Day off   |
| 96  | 4 <sup>th</sup> Oct   | Friday    | Holiday                   | Holiday              | Holiday   |
| 97  | 5 <sup>th</sup> Oct   | Saturday  | Holiday                   | Holiday              | Holiday   |
| 98  | 6 <sup>th</sup> Oct   | Sunday    | Holiday                   | Holiday              | Holiday   |
| 99  | 7 <sup>th</sup> Oct   | Monday    | Holiday                   | Holiday              | Holiday   |
| 100 | 8 <sup>th</sup> Oct   | Tuesday   | Holiday                   | Holiday              | Holiday   |
| 101 | 9 <sup>th</sup> Oct   | Wednesday | Holiday                   | Holiday              | Holiday   |
| 102 | 10 <sup>th</sup> Oct  | Thursday  | Holiday                   | Holiday              | Holiday   |
| 103 | 11 <sup>th</sup> Oct  | Friday    | Holiday                   | Holiday              | Holiday   |
| 104 | 12 <sup>th</sup> Oct  | Saturday  | Holiday                   | Holiday              | Holiday   |
| 105 | 13 <sup>th</sup> Oct  | Sunday    | Holiday                   | Holiday              | Holiday   |
| 106 | 14 <sup>th</sup> Oct  | Monday    | Teaching Day 59           | Teaching Day 43      | Monthly Review Meeting for the month of Sept. 2019                        |
| 107 | 15 <sup>th</sup> Oct  | Tuesday   | Teaching Day 60           | Teaching Day 44      |   |
| 108 | 16 <sup>th</sup> Oct  | Wednesday | Teaching Day 61           | Teaching Day 45      |   |
| 109 | 17 <sup>th</sup> Oct  | Thursday  | Teaching Day 62           | Teaching Day 46      |   |
| 110 | 18 <sup>th</sup> Oct  | Friday    | Teaching Day 63           | Teaching Day 47      |   |
| 111 | 19 <sup>th</sup> Oct  | Saturday  | Weekly off/<br>Activities | Weekly off           | [Parent-Teacher Meeting - I]  |
| 112 | 20 <sup>th</sup> Oct  | Sunday    | Weekly off                | Weekly off           |   |
| 113 | 21 <sup>st</sup> Oct  | Monday    | Teaching Day 64           | Teaching Day 48      | [Choice of Electives for next Sem]  |
| 114 | 22 <sup>nd</sup> Oct  | Tuesday   | Teaching Day 65           | Teaching Day 49      | [Submission of Requisition for Infrastructure and Manpower]               |
| 115 | 23 <sup>rd</sup> Oct  | Wednesday | Teaching Day 66           | Teaching Day 50      |   |
| 116 | 24 <sup>th</sup> Oct  | Thursday  | Teaching Day 67           | Teaching Day 51      |   |
| 117 | 25 <sup>th</sup> Oct  | Friday    | Teaching Day 68           | Teaching Day 52      | [Innovative Idea competition of all Dept]                                 |
| 118 | 26 <sup>th</sup> Oct  | Saturday  | Weekly off                |                      |   |
| 119 | 27 <sup>th</sup> Oct  | Sunday    | Holiday                   |                      | Kali Puja/Diwali  |
| 120 | 28 <sup>th</sup> Oct  | Monday    | Holiday                   |                      | Immersion of Goddess Kali   |
| 121 | 29 <sup>th</sup> Oct  | Tuesday   | Holiday                   |                      | Bhatridwitiya   |

|     |                      |           |                           |                       |   |
|-----|----------------------|-----------|---------------------------|-----------------------|---|
| 122 | 30 <sup>th</sup> Oct | Wednesday | Teaching Day 69           | Teaching Day 53       | [Submission of 2 <sup>nd</sup> Project]<br>[Final Evaluation of Innovative Idea competition]  |
| 123 | 31 <sup>st</sup> Oct | Thursday  | Teaching Day 70           | Teaching Day 54       |   |
| 124 | 1 <sup>st</sup> Nov  | Friday    | Teaching Day 71           | Teaching Day 55       |   |
| 125 | 2 <sup>nd</sup> Nov  | Saturday  | Weekly off/<br>Activities | Weekly off            | Seminar- CE, ME, AUE<br>BME, FT   |
| 126 | 3 <sup>rd</sup> Nov  | Sunday    | Weekly off                | Weekly off            |   |
| 127 | 4 <sup>th</sup> Nov  | Monday    | Teaching Day 72           | Teaching Day 56       | [2nd Unit Test]<br>[Collection of Student feedback]<br>Semester Exam Form Filling up Starts   |
| 128 | 5 <sup>th</sup> Nov  | Tuesday   | Teaching Day 73           | Teaching Day 57       | [2nd Unit Test]<br>[Collection of Student feedback]   |
| 129 | 6 <sup>th</sup> Nov  | Wednesday | Teaching Day 74           | Teaching Day 58       | [2nd Unit Test]<br>[Collection of Student feedback]<br>Semester Exam Form Filling up ends   |
| 130 | 7 <sup>th</sup> Nov  | Thursday  | Teaching Day 75           | Teaching Day 59       | Monthly Review Meeting for the month of Oct. 2019   |
| 131 | 8 <sup>th</sup> Nov  | Friday    | Teaching Day 76           | Teaching Day 60       |   |
| 132 | 9 <sup>th</sup> Nov  | Saturday  | Weekly off                | Weekly off            |   |
| 133 | 10 <sup>th</sup> Nov | Sunday    | Weekly off                | Weekly off            |   |
| 134 | 11 <sup>th</sup> Nov | Monday    | Teaching Day 77           | Teaching Day 61       | Remedial Class  |
| 135 | 12 <sup>th</sup> Nov | Tuesday   | Holiday                   | Guru Nanak's Birthday | Guru Nanak's Birthday   |
| 136 | 13 <sup>th</sup> Nov | Wednesday | Teaching Day 78           | Teaching Day 62       | Remedial Class<br>[Distribution Answer script of 2 <sup>nd</sup> Unit Test ]  |
| 137 | 14 <sup>th</sup> Nov | Thursday  | Teaching Day 79           | Teaching Day 63       | Remedial Class<br>[Distribution Answer script of 2 <sup>nd</sup> Unit Test ]  |
| 138 | 15 <sup>th</sup> Nov | Friday    | Teaching Day 80           | Teaching Day 64       | Remedial Class<br>[Distribution Answer script of 2 <sup>nd</sup> Unit Test ]<br>[Publication of 2 <sup>nd</sup> Unit Test Result]<br>Semester Exam Form Filling up ends |
| 139 | 16 <sup>th</sup> Nov | Saturday  | Weekly off                | Weekly off            |   |
| 140 | 17 <sup>th</sup> Nov | Sunday    | Weekly off                | Weekly off            |   |
| 141 | 18 <sup>th</sup> Nov | Monday    | Semester End Exam         | Teaching Day 65       | [Practical Examination & Viva Voce]   |
| 142 | 19 <sup>th</sup> Nov | Tuesday   | Semester End Exam         | Teaching Day 66       | [Practical Examination & Viva Voce]   |

|     |                      |           |                                  |                                     |  |
|-----|----------------------|-----------|----------------------------------|-------------------------------------|--|
| 143 | 20 <sup>th</sup> Nov | Wednesday | Semester End Exam                | Teaching Day 67                     | [Practical Examination & Viva Voce]  |
| 144 | 21 <sup>st</sup> Nov | Thursday  | Semester End Exam                | Teaching Day 68                     | [Practical Examination & Viva Voce]  |
| 145 | 22 <sup>nd</sup> Nov | Friday    | Semester End Exam                | Teaching Day 69                     | [Practical Examination & Viva Voce]  |
| 146 | 23 <sup>rd</sup> Nov | Saturday  | Weekly off/<br>Semester End Exam | Weekly off                          | [Practical Examination & Viva Voce] If required                              |
| 147 | 24 <sup>th</sup> Nov | Sunday    | Weekly off                       | Weekly off                          |  |
| 148 | 25 <sup>th</sup> Nov | Monday    | Semester End Exam                | Teaching Day 70                     | [Theory Examination]   |
| 149 | 26 <sup>th</sup> Nov | Tuesday   | Semester End Exam                | Teaching Day 71                     | [Theory Examination]   |
| 150 | 27 <sup>th</sup> Nov | Wednesday | Semester End Exam                | Teaching Day 72                     | [Theory Examination]   |
| 151 | 28 <sup>th</sup> Nov | Thursday  | Semester End Exam                | Teaching Day 73                     | [Theory Examination]   |
| 152 | 29 <sup>th</sup> Nov | Friday    | Semester End Exam                | Teaching Day 74                     | [Theory Examination]   |
| 153 | 30 <sup>th</sup> Nov | Saturday  | Weekly off/<br>Semester End Exam | Teaching Day 75                     | [Theory Examination]- if required  |
| 154 | 1 <sup>st</sup> Dec  | Sunday    | Weekly off                       | Weekly off                          |  |
| 155 | 2 <sup>nd</sup> Dec  | Monday    | Semester End Exam                | Teaching Day 76<br>Remedial Classes | [Theory Examination]<br><br>Fees Collection for Even Semester 2020 begins    |
| 156 | 3 <sup>rd</sup> Dec  | Tuesday   | Semester End Exam                | Teaching Day 77<br>Remedial Classes | [Theory Examination]   |
| 157 | 4 <sup>th</sup> Dec  | Wednesday | Semester End Exam                | Teaching Day 78<br>Remedial Classes | [Theory Examination]   |
| 158 | 5 <sup>th</sup> Dec  | Thursday  | Semester End Exam                | Teaching Day 79<br>Remedial Classes | [Theory Examination]   |
| 159 | 6 <sup>th</sup> Dec  | Friday    | Semester End Exam                | Teaching Day 80<br>Remedial Classes | [Theory Examination]<br><br>Monthly Review Meeting for the month of Nov.2019 |
| 160 | 7 <sup>th</sup> Dec  | Saturday  | Weekly off/<br>Semester End Exam | Holiday                             | [Theory Examination] - If required   |
| 161 | 8 <sup>th</sup> Dec  | Sunday    | Weekly off                       | Weekly off                          |  |
| 162 | 9 <sup>th</sup> Dec  | Monday    | Evaluation                       | Semester End Exam                   | Evaluation of answer script/   |
| 163 | 10 <sup>th</sup> Dec | Tuesday   | Evaluation                       | Semester End Exam                   | Evaluation of answer script  |
| 164 | 11 <sup>th</sup> Dec | Wednesday | Evaluation                       | Semester End Exam                   | Evaluation of answer script  |
| 165 | 12 <sup>th</sup> Dec | Thursday  | Evaluation                       | Semester End Exam                   | Evaluation of answer script  |
| 166 | 13 <sup>th</sup> Dec | Friday    | Evaluation                       | Semester End Exam                   | Evaluation of answer script  |
| 167 | 14 <sup>th</sup> Dec | Saturday  | Evaluation                       | Semester End Exam                   | Evaluation of answer script  |
| 168 | 15 <sup>th</sup> Dec | Sunday    | Weekly off                       |                                     |  |
| 169 | 16 <sup>th</sup> Dec | Monday    | Evaluation                       | Semester End Exam                   | Evaluation of answer script<br>Commencement of Even Semester 2020            |

|     |                      |           |                        |                       |  |
|-----|----------------------|-----------|------------------------|-----------------------|--|
|     |                      |           | Teaching Day 1         |                       | Training of students (2 <sup>nd</sup> , 3 <sup>rd</sup> &4 <sup>th</sup> year)           |
| 170 | 17 <sup>th</sup> Dec | Tuesday   | Evaluation             | Semester End Exam     | Evaluation of answer script  |
|     |                      |           | Teaching Day 2         |                       | Training of students (2 <sup>nd</sup> , 3 <sup>rd</sup> &4 <sup>th</sup> year)           |
| 171 | 18 <sup>th</sup> Dec | Wednesday | Evaluation             | Semester End Exam     | Evaluation of answer script  |
|     |                      |           | Teaching Day 3         |                       | Training of students (2 <sup>nd</sup> , 3 <sup>rd</sup> &4 <sup>th</sup> year)           |
|     |                      |           | Evaluation             | Semester End Exam     | Evaluation of answer script  |
| 172 | 19 <sup>th</sup> Dec | Thursday  |                        |                       | Lesson Plan Submission for next semester   |
|     |                      |           | Teaching Day 4         |                       | Publication of time table for Even Sem 2020  |
|     |                      |           |                        |                       | Training of students (2 <sup>nd</sup> , 3 <sup>rd</sup> &4 <sup>th</sup> year)           |
|     |                      |           | Evaluation             | Semester End Exam     | Evaluation of answer script  |
| 173 | 20 <sup>th</sup> Dec | Friday    |                        |                       | Training of students (2 <sup>nd</sup> , 3 <sup>rd</sup> &4 <sup>th</sup> year)           |
|     |                      |           | Teaching Day 5         |                       |  |
| 174 | 21 <sup>st</sup> Dec | Saturday  | Weekly off/Evaluation  | Weekly off/Evaluation | Evaluation of answer script - If required  |
| 175 | 22 <sup>nd</sup> Dec | Sunday    | Weekly off             |                       |  |
|     |                      |           | Evaluation             | Evaluation            | Evaluation of answer script - If required  |
| 176 | 23 <sup>rd</sup> Dec | Monday    |                        |                       | Training of students (2 <sup>nd</sup> , 3 <sup>rd</sup> &4 <sup>th</sup> year)           |
|     |                      |           | Teaching Day 6         |                       |  |
|     |                      |           | Evaluation/ Activities | Evaluation            | Evaluation of answer script- if required   |
| 177 | 24 <sup>th</sup> Dec | Tuesday   |                        |                       | Alumni Meet  |
|     |                      |           | Teaching Day 7         |                       | Training of students (2 <sup>nd</sup> , 3 <sup>rd</sup> &4 <sup>th</sup> year)           |
| 178 | 25 <sup>th</sup> Dec | Wednesday | Holiday                |                       | Christmas Day  |
| 179 | 26 <sup>th</sup> Dec | Thursday  | Semester Break         | Semester Break        | Semester Break   |
| 180 | 27 <sup>th</sup> Dec | Friday    | Semester Break         | Semester Break        | Semester Break, Announcement of End Semester Result (Odd Semester-July to December 2019) |
| 181 | 28 <sup>th</sup> Dec | Saturday  | Weekly off             |                       | Semester Break   |
| 182 | 29 <sup>th</sup> Dec | Sunday    | Weekly off             |                       | Semester Break   |
| 183 | 30 <sup>th</sup> Dec | Monday    | Semester Break         | Semester Break        | Semester Break   |
|     |                      |           |                        | Semester Break        | Semester Break   |
| 184 | 31 <sup>st</sup> Dec | Tuesday   | Semester Break         |                       | Fees Collection for Even Semester 2020 end   |

**Note: Particulars date may vary depending on situation which will be notified in Institute website**

| Day | Month                | Day       | Routine Activity   | Particulars  |
|-----|----------------------|-----------|--|--|
| 1   | 1 <sup>st</sup> Jan  | Tuesday   | Winter Break end   |  |
| 2   | 2 <sup>nd</sup> Jan  | Wednesday | Reopen after winter Recess (For Faculty)- Co Curricular Activity*    | Announcement of End Semester Result (Odd Semester-July to December 2018) |
| 3   | 3 <sup>rd</sup> Jan  | Thursday  | Co-Curricular Activity*  |  |
| 4   | 4 <sup>th</sup> Jan  | Friday    | Co-Curricular Activity   | Monthly Review Meeting for December 2018                                 |
| 5   | 5 <sup>th</sup> Jan  | Saturday  | Weekly off   |  |
| 6   | 6 <sup>th</sup> Jan  | Sunday    | Weekly off   |  |
| 7   | 7 <sup>th</sup> Jan  | Monday    | 1 Teaching Day [Commencement of Even Semester Academic Session 2019] |  |
| 8   | 8 <sup>th</sup> Jan  | Tuesday   | 2 Teaching Day   | [Registration ongoing batch-Accounts, Academic and Examination module]   |
| 9   | 9 <sup>th</sup> Jan  | Wednesday | 3 Teaching Day   | [Registration ongoing batch-Accounts, Academic and Examination module]   |
| 10  | 10 <sup>th</sup> Jan | Thursday  | 4 Teaching Day   | [Registration ongoing batch-Accounts, Academic and Examination module]   |
| 11  | 11 <sup>th</sup> Jan | Friday    | 5 Teaching Day   | [Registration ongoing batch-Accounts, Academic and Examination module]   |
| 12  | 12 <sup>th</sup> Jan | Saturday  | Weekly off   |  |
| 13  | 13 <sup>th</sup> Jan | Sunday    | Weekly off   |  |
| 14  | 14 <sup>th</sup> Jan | Monday    | 6 Teaching Day   |  |
| 15  | 15 <sup>th</sup> Jan | Tuesday   | 7 Teaching Day   |  |
| 16  | 16 <sup>th</sup> Jan | Wednesday | 8 Teaching Day   |  |
| 17  | 17 <sup>th</sup> Jan | Thursday  | 9 Teaching Day   |  |
| 18  | 18 <sup>th</sup> Jan | Friday    | 10 Teaching Day  |  |
| 19  | 19 <sup>th</sup> Jan | Saturday  | Weekly off   |  |
| 20  | 20 <sup>th</sup> Jan | Sunday    | Weekly off   |  |
| 21  | 21 <sup>st</sup> Jan | Monday    | 11 Teaching Day  |  |
| 22  | 22 <sup>nd</sup> Jan | Tuesday   | 12 Teaching Day  |  |
| 23  | 23 <sup>rd</sup> Jan | Wednesday | Holiday  | Netaji's Birthday  |
| 24  | 24 <sup>th</sup> Jan | Thursday  | 13 Teaching Day  |  |
| 25  | 25 <sup>th</sup> Jan | Friday    | Extra-Curricular Activity  | Annual Sports  |
| 26  | 26 <sup>th</sup> Jan | Saturday  | Holiday  | Republic Day   |
| 27  | 27 <sup>th</sup> Jan | Sunday    | Weekly off   |  |
| 28  | 28 <sup>th</sup> Jan | Monday    | 14 Teaching Day  |  |
| 29  | 29 <sup>th</sup> Jan | Tuesday   | 15 Teaching Day  | Distribution of project to students                                      |
| 30  | 30 <sup>th</sup> Jan | Wednesday | 16 Teaching Day  | Distribution of project to students                                      |
| 31  | 31 <sup>st</sup> Jan | Thursday  | 17 Teaching Day  |  |
| 32  | 1 <sup>st</sup> Feb  | Friday    | 18 Teaching Day  |  |



## Even Semester 2020 [January to June]

| Day | Month                | Day       | Routine Activity   | Particulars  |
|-----|----------------------|-----------|--|--|
| 1   | 1 <sup>st</sup> Jan  | Tuesday   | Winter Break end   |  |
| 2   | 2 <sup>nd</sup> Jan  | Wednesday | Reopen after winter Recess (For Faculty)- Co Curricular Activity*    | Announcement of End Semester Result (Odd Semester-July to December 2018) |
| 3   | 3 <sup>rd</sup> Jan  | Thursday  | Co-Curricular Activity*  |  |
| 4   | 4 <sup>th</sup> Jan  | Friday    | Co-Curricular Activity   | Monthly Review Meeting for December 2018                                 |
| 5   | 5 <sup>th</sup> Jan  | Saturday  | Weekly off   |  |
| 6   | 6 <sup>th</sup> Jan  | Sunday    | Weekly off   |  |
| 7   | 7 <sup>th</sup> Jan  | Monday    | 1 Teaching Day [Commencement of Even Semester Academic Session 2019] |  |
| 8   | 8 <sup>th</sup> Jan  | Tuesday   | 2 Teaching Day   | [Registration ongoing batch-Accounts, Academic and Examination module]   |
| 9   | 9 <sup>th</sup> Jan  | Wednesday | 3 Teaching Day   | [Registration ongoing batch-Accounts, Academic and Examination module]   |
| 10  | 10 <sup>th</sup> Jan | Thursday  | 4 Teaching Day   | [Registration ongoing batch-Accounts, Academic and Examination module]   |
| 11  | 11 <sup>th</sup> Jan | Friday    | 5 Teaching Day   | [Registration ongoing batch-Accounts, Academic and Examination module]   |
| 12  | 12 <sup>th</sup> Jan | Saturday  | Weekly off   |  |
| 13  | 13 <sup>th</sup> Jan | Sunday    | Weekly off   |  |
| 14  | 14 <sup>th</sup> Jan | Monday    | 6 Teaching Day   |  |
| 15  | 15 <sup>th</sup> Jan | Tuesday   | 7 Teaching Day   |  |
| 16  | 16 <sup>th</sup> Jan | Wednesday | 8 Teaching Day   |  |
| 17  | 17 <sup>th</sup> Jan | Thursday  | 9 Teaching Day   |  |
| 18  | 18 <sup>th</sup> Jan | Friday    | 10 Teaching Day  |  |
| 19  | 19 <sup>th</sup> Jan | Saturday  | Weekly off   |  |
| 20  | 20 <sup>th</sup> Jan | Sunday    | Weekly off   |  |
| 21  | 21 <sup>st</sup> Jan | Monday    | 11 Teaching Day  |  |
| 22  | 22 <sup>nd</sup> Jan | Tuesday   | 12 Teaching Day  |  |
| 23  | 23 <sup>rd</sup> Jan | Wednesday | Holiday  | Netaji's Birthday  |
| 24  | 24 <sup>th</sup> Jan | Thursday  | 13 Teaching Day  |  |
| 25  | 25 <sup>th</sup> Jan | Friday    | Extra-Curricular Activity  | Annual Sports  |
| 26  | 26 <sup>th</sup> Jan | Saturday  | Holiday  | Republic Day   |
| 27  | 27 <sup>th</sup> Jan | Sunday    | Weekly off   |  |
| 28  | 28 <sup>th</sup> Jan | Monday    | 14 Teaching Day  |  |
| 29  | 29 <sup>th</sup> Jan | Tuesday   | 15 Teaching Day  | Distribution of project to students                                      |
| 30  | 30 <sup>th</sup> Jan | Wednesday | 16 Teaching Day  | Distribution of project to students                                      |
| 31  | 31 <sup>st</sup> Jan | Thursday  | 17 Teaching Day  |  |

|    |                      |           |                                       |   |
|----|----------------------|-----------|---------------------------------------|---|
| 32 | 1 <sup>st</sup> Feb  | Friday    | 18 Teaching Day                       |   |
| 33 | 2 <sup>nd</sup> Feb  | Saturday  | Weekly off/ Co-Curricular Activity    | Staff Picnic  |
| 34 | 3 <sup>rd</sup> Feb  | Sunday    | Weekly off                            |   |
| 35 | 4 <sup>th</sup> Feb  | Monday    | 19 Teaching Day                       | Monthly Review Meeting for January 2019   |
| 36 | 5 <sup>th</sup> Feb  | Tuesday   | 20 Teaching Day                       |   |
| 37 | 6 <sup>th</sup> Feb  | Wednesday | 21 Teaching Day                       |   |
| 38 | 7 <sup>th</sup> Feb  | Thursday  | 22 Teaching Day                       | Innovative Idea Proposal Submission at Dept   |
| 39 | 8 <sup>th</sup> Feb  | Friday    | 23 Teaching Day                       | [Innovative Idea Proposal Submission at Dept]   |
| 40 | 9 <sup>th</sup> Feb  | Saturday  | Weekly off/ Extra-Curricular Activity |   |
| 41 | 10 <sup>th</sup> Feb | Sunday    | Holiday                               | Swaraswati Puja   |
| 42 | 11 <sup>th</sup> Feb | Monday    | 24 Teaching Day                       |   |
| 43 | 12 <sup>th</sup> Feb | Tuesday   | 25 Teaching Day                       | [Distribution 1 <sup>st</sup> Assignment]   |
| 44 | 13 <sup>th</sup> Feb | Wednesday | 26 Teaching Day                       | [Distribution 1 <sup>st</sup> Assignment]   |
| 45 | 14 <sup>th</sup> Feb | Thursday  | 27 Teaching Day                       | [Submission of Q paper-U Test 1]  |
| 46 | 15 <sup>th</sup> Feb | Friday    | 28 Teaching Day                       | [Submission of Q paper-U Test 1]<br>[Group League Matches of SJS Cricket Tournament for Staff-SJSMT]<br>[Group League Matches of SJS Volleyball Tournament for Students-SJSMVT]                     |
| 47 | 16 <sup>th</sup> Feb | Saturday  | Weekly off/ Co-Curricular Activity    | [Seminar – ECE, EIE, Physics]<br>[Group League Matches of SJS Cricket Tournament for Staff-SJSMT]<br>[Group League Matches of SJS Volleyball Tournament for Students-SJSMVT]                        |
| 48 | 17 <sup>th</sup> Feb | Sunday    | Weekly off                            | [Group League Matches of SJS Cricket Tournament for Students-SJSMCT]  |
| 49 | 18 <sup>th</sup> Feb | Monday    | 29 Teaching Day                       | [Group League Matches of SJS Cricket Tournament for Students-SJSMCT]  |
| 50 | 19 <sup>th</sup> Feb | Tuesday   | 30 Teaching Day                       | [Innovative Idea competition Dept – ECE, CSE, IT, CA, EIE, Physics]<br>[Semifinal & final Matches of SJS Volleyball Tournament for Students-SJSMVT]   |
| 51 | 20 <sup>th</sup> Feb | Wednesday | 31 Teaching Day                       | [Innovative Idea competition Dept – EE, CE, ME, , Chemistry,]<br>[Semifinal Matches of SJS Cricket Tournament for Students-SJSMCT]<br>[Semifinal Matches of SJS Cricket Tournament for Staff-SJSMT] |
| 52 | 21 <sup>st</sup> Feb | Thursday  | 32 Teaching Day                       | [Final Matches of SJS Cricket Tournament for Students-SJSMCT]<br>[Final Matches of SJS Cricket Tournament for Staff-SJSMT]  |
| 53 | 22 <sup>nd</sup> Feb | Friday    | 33 Teaching Day                       |   |
| 54 | 23 <sup>rd</sup> Feb | Saturday  | Weekly off/ Extra-Curricular Activity |   |
| 55 | 24 <sup>th</sup> Feb | Sunday    | Weekly off                            |   |
| 56 | 25 <sup>th</sup> Feb | Monday    | 34 Teaching Day                       |   |
| 57 | 26 <sup>th</sup> Feb | Tuesday   | 35 Teaching Day                       | [Submission of 1 <sup>st</sup> Assignment]  |
| 58 | 27 <sup>th</sup> Feb | Wednesday | 36 Teaching Day                       | [Submission of 1 <sup>st</sup> Assignment]  |

|    |                      |           |                                    |  |
|----|----------------------|-----------|------------------------------------|--|
|    |                      |           |                                    | [Distribution of Topic for Debate/ PPT/ GD ]   |
| 59 | 28 <sup>th</sup> Feb | Thursday  | 37 Teaching Day                    |  |
| 60 | 1 <sup>st</sup> Mar  | Friday    | 38 Teaching Day                    |  |
| 61 | 2 <sup>nd</sup> Mar  | Saturday  | Weekly off                         |  |
| 62 | 3 <sup>rd</sup> Mar  | Sunday    | Weekly off                         |  |
| 63 | 4 <sup>th</sup> Mar  | Monday    | 39 Teaching Day                    | Monthly Review Meeting for February 2019   |
| 64 | 5 <sup>th</sup> Mar  | Tuesday   | 40 Teaching Day                    |  |
| 65 | 6 <sup>th</sup> Mar  | Wednesday | 41 Teaching Day                    | 1st Unit Test  |
| 66 | 7 <sup>th</sup> Mar  | Thursday  | 42 Teaching Day                    | 1st Unit Test  |
| 67 | 8 <sup>th</sup> Mar  | Friday    | 43 Teaching Day                    | 1st Unit Test  |
| 68 | 9 <sup>th</sup> Mar  | Saturday  | Weekly off                         | 1st Unit Test (If required)  |
| 69 | 10 <sup>th</sup> Mar | Sunday    | Weekly off                         |  |
| 70 | 11 <sup>th</sup> Mar | Monday    | 44 Teaching Day                    |  |
| 72 | 12 <sup>th</sup> Mar | Tuesday   | 45 Teaching Day                    |  |
| 73 | 13 <sup>th</sup> Mar | Wednesday | 46 Teaching Day                    |  |
| 74 | 14 <sup>th</sup> Mar | Thursday  | 47 Teaching Day                    | [Debate / GD/ PPT Competition]<br>[Distribution of Answer script- 1 <sup>st</sup> Unit Test] |
| 75 | 15 <sup>th</sup> Mar | Friday    | 48 Teaching Day                    | [Debate / GD/ PPT Competition]<br>[Distribution of Answer script- 1 <sup>st</sup> Unit Test] |
| 76 | 16 <sup>th</sup> Mar | Saturday  | Weekly off/ Co-Curricular Activity | [Seminar- CE, ME]  |
| 77 | 17 <sup>th</sup> Mar | Sunday    | Weekly off                         |  |
| 78 | 18 <sup>th</sup> Mar | Monday    | 49 Teaching Day                    | 1st Unit Test Result   |
| 79 | 19 <sup>th</sup> Mar | Tuesday   | 50 Teaching Day                    | 1 <sup>st</sup> review of Project  |
| 80 | 20 <sup>th</sup> Mar | Wednesday | 51 Teaching Day                    |  |
| 81 | 21 <sup>st</sup> Mar | Thursday  | Holiday                            | Dolyatra   |
| 82 | 22 <sup>nd</sup> Mar | Friday    | Holiday                            | Holi   |
| 83 | 23 <sup>rd</sup> Mar | Saturday  | Weekly off/ Co-Curricular Activity | [Seminar –EE ,]  |
| 84 | 24 <sup>th</sup> Mar | Sunday    | Weekly off                         |  |
| 85 | 25 <sup>th</sup> Mar | Monday    | 52 Teaching Day                    | [Submission of Q paper- 2 <sup>nd</sup> Unit Test-Diploma]                                   |
| 86 | 26 <sup>th</sup> Mar | Tuesday   | 53 Teaching Day                    | [Submission of Q paper- 2 <sup>nd</sup> Unit Test-Diploma]                                   |
| 87 | 27 <sup>th</sup> Mar | Wednesday | 54 Teaching Day                    | [Distribution of 2 <sup>nd</sup> Assignment- Diploma ]                                       |
| 88 | 28 <sup>th</sup> Mar | Thursday  | 55 Teaching Day                    | [Final Evaluation of Innovative Ideacompetition]   |
| 89 | 29 <sup>th</sup> Mar | Friday    | 56 Teaching Day                    | [Final Evaluation of Innovative Ideacompetition]   |
| 90 | 30 <sup>th</sup> Mar | Saturday  | Weekly off/ Co-Curricular Activity | [Parent-Teacher Meeting - I]   |
| 91 | 31 <sup>st</sup> Mar | Sunday    | Weekly off                         |  |
| 92 | 1 <sup>st</sup> Apr  | Monday    | 57 Teaching Day                    |  |
| 93 | 2 <sup>nd</sup> Apr  | Tuesday   | 58 Teaching Day                    |  |
| 94 | 3 <sup>rd</sup> Apr  | Wednesday | 59 Teaching Day                    |  |
| 95 | 4 <sup>th</sup> Apr  | Thursday  | 60 Teaching Day                    | Monthly Review Meeting for March 2019  |
| 96 | 5 <sup>th</sup> Apr  | Friday    | 61 Teaching Day                    |  |

|     |                      |           |                                    |   |
|-----|----------------------|-----------|------------------------------------|---|
| 97  | 6 <sup>th</sup> Apr  | Saturday  | Weekly off/ Co-Curricular Activity | [Seminar –English, Mathematics, Education]  |
| 98  | 7 <sup>th</sup> Apr  | Sunday    | Weekly off                         |   |
| 99  | 8 <sup>th</sup> Apr  | Monday    | 62 Teaching Day                    | [Submission of 2 <sup>nd</sup> Assignment-Diploma &]  |
| 100 | 9 <sup>th</sup> Apr  | Tuesday   | 63 Teaching Day                    |   |
| 101 | 10 <sup>th</sup> Apr | Wednesday | 64 Teaching Day                    | [2 <sup>nd</sup> Unit Test- Diploma]  |
| 102 | 11 <sup>th</sup> Apr | Thursday  | 65 Teaching Day                    | [2 <sup>nd</sup> Unit Test- Diploma]  |
| 103 | 12 <sup>th</sup> Apr | Friday    | 66 Teaching Day                    | [2 <sup>nd</sup> Unit Test- Diploma]  |
| 104 | 13 <sup>th</sup> Apr | Saturday  | Weekly off/ Co-Curricular Activity | [2 <sup>nd</sup> Unit Test- Diploma]<br>Project Seminar by- ECE, CSE, IT, CA, EIE, Physics  |
| 105 | 14 <sup>th</sup> Apr | Sunday    | Weekly off                         |   |
| 106 | 15 <sup>th</sup> Apr | Monday    | Holiday                            | Bengali New Year  |
| 107 | 16 <sup>th</sup> Apr | Tuesday   | 67 Teaching Day                    |   |
| 108 | 17 <sup>th</sup> Apr | Wednesday | 68 Teaching Day                    | [Distribution Answer script of 2 <sup>nd</sup> Unit Test- Diploma]  |
| 109 | 18 <sup>th</sup> Apr | Thursday  | 69 Teaching Day                    | [Distribution Answer script of 2 <sup>nd</sup> Unit Test- Diploma]  |
| 110 | 19 <sup>th</sup> Apr | Friday    | Holiday                            | Good Friday   |
| 111 | 20 <sup>th</sup> Apr | Saturday  | Weekly off/ Co-Curricular Activity | Project Seminar by- EE, CE, ME,   |
| 112 | 21 <sup>st</sup> Apr | Sunday    | Weekly off                         |   |
| 113 | 22 <sup>nd</sup> Apr | Monday    | 70 Teaching Day                    | [Submission of Q paper for 3 <sup>rd</sup> Unit Test- Diploma and 2 <sup>nd</sup> Unit Test-All other courses]  |
| 114 | 23 <sup>rd</sup> Apr | Tuesday   | 71 Teaching Day                    | [Submission of Q paper for 3 <sup>rd</sup> Unit Test- Diploma and 2 <sup>nd</sup> Unit Test-All other courses]<br>[Publication of 2 <sup>nd</sup> Unit Test Result] |
| 115 | 24 <sup>th</sup> Apr | Wednesday | 72 Teaching Day                    | [Distribution of 3 <sup>rd</sup> Assignment –Diploma AND 2 <sup>nd</sup> Assignment-All other courses]  |
| 116 | 25 <sup>th</sup> Apr | Thursday  | 73 Teaching Day                    |   |
| 117 | 26 <sup>th</sup> Apr | Friday    | 74 Teaching Day                    |   |
| 118 | 27 <sup>th</sup> Apr | Saturday  | Weekly off                         |   |
| 119 | 28 <sup>th</sup> Apr | Sunday    | Weekly off                         |   |
| 120 | 29 <sup>th</sup> Apr | Monday    | 75 Teaching Day                    |   |
| 121 | 30 <sup>th</sup> Apr | Tuesday   | 76 Teaching Day                    |   |
| 122 | 1 <sup>st</sup> May  | Wednesday | Holiday                            | May Day   |
| 123 | 2 <sup>nd</sup> May  | Thursday  | 77 Teaching Day                    |   |
| 124 | 3 <sup>rd</sup> May  | Friday    | 78 Teaching Day                    | Monthly Review Meeting for April 2019   |
| 125 | 4 <sup>th</sup> May  | Saturday  | Weekly off                         |   |
| 126 | 5 <sup>th</sup> May  | Sunday    | Weekly off                         |   |
| 127 | 6 <sup>th</sup> May  | Monday    | 79 Teaching Day                    | Submission of 3 <sup>rd</sup> Assignment - Diploma and 2 <sup>nd</sup> Assignment-All other courses   |
| 128 | 7 <sup>th</sup> May  | Tuesday   | 80 Teaching Day                    | [Choice of Electives for next Sem]  |
| 129 | 8 <sup>th</sup> May  | Wednesday | 81 Teaching Day                    | [3 <sup>rd</sup> Unit Test- Diploma ]<br>[2 <sup>nd</sup> Unit Test-All other courses]<br>[Collection of Student feedback]  |
| 130 | 9 <sup>th</sup> May  | Thursday  | 82 Teaching Day                    | [3 <sup>rd</sup> Unit Test- Diploma]  |

|     |                       |           |                 |   |
|-----|-----------------------|-----------|-----------------|---|
|     |                       |           |                 | [2 <sup>nd</sup> Unit Test-All other courses]<br>[Collection of Student feedback]   |
| 131 | 10 <sup>th</sup> May  | Friday    | 83 Teaching Day | [3 <sup>rd</sup> Unit Test-Diploma]<br>[2 <sup>nd</sup> Unit Test-All other courses]<br>[Collection of Student feedback]<br>[Submission of Requisition for Infrastructure and Manpower] |
|     | 11 <sup>th</sup> May  | Saturday  | Weekly off      | [3 <sup>rd</sup> Unit Test- Diploma &]<br>[2 <sup>nd</sup> Unit Test-All other courses-if required]   |
| 132 | 12 <sup>th</sup> May  | Sunday    | Weekly off      |   |
| 133 | 13 <sup>th</sup> May  | Monday    | 84 Teaching Day |   |
| 134 | 14 <sup>th</sup> May  | Tuesday   | 85 Teaching Day |   |
| 135 | 15 <sup>th</sup> May  | Wednesday | 86 Teaching Day | Distribution Answer script of 2 <sup>nd</sup> Unit Test/3 <sup>rd</sup> Unit Test (As applicable)   |
| 136 | 16 <sup>th</sup> May  | Thursday  | 87 Teaching Day |   |
| 137 | 17 <sup>th</sup> May  | Friday    | 88 Teaching Day | [Publication of 2 <sup>nd</sup> Unit Test/3 <sup>rd</sup> Unit Test Result - As applicable]<br>[Semester Exam Form Filling upends]<br>Farewell to final year students                   |
| 138 | 18 <sup>th</sup> May  | Saturday  | Weekly off      |   |
| 139 | 19 <sup>th</sup> May  | Sunday    | Weekly off      |   |
| 140 | 20 <sup>th</sup> May  | Monday    | 89 Teaching Day | Faculty Development Program   |
| 141 | 21 <sup>st</sup> May  | Tuesday   | 90 Teaching Day | Faculty Development Program   |
| 142 | 22 <sup>nd</sup> May  | Wednesday | Study Leave     | Faculty Development Program   |
| 143 | 23 <sup>rd</sup> May  | Thursday  | Study Leave     | Faculty Development Program   |
| 144 | 24 <sup>th</sup> May  | Friday    | Study Leave     | Faculty Development Program   |
| 145 | 25 <sup>th</sup> May  | Saturday  | Weekly off      | [Parent-Teacher Meeting - II]   |
| 146 | 26 <sup>th</sup> May  | Sunday    | Weekly off      |   |
| 147 | 27 <sup>th</sup> May  | Monday    | Theory Exam     |   |
| 148 | 28 <sup>th</sup> May  | Tuesday   | Theory Exam     |   |
| 149 | 29 <sup>th</sup> May  | Wednesday | Theory Exam     |   |
| 150 | 30 <sup>th</sup> May  | Thursday  | Theory Exam     |   |
| 151 | 31 <sup>st</sup> May  | Friday    | Theory Exam     |   |
| 152 | 1 <sup>st</sup> June  | Saturday  | Theory Exam     |   |
| 153 | 2 <sup>nd</sup> June  | Sunday    | Weekly off      |   |
| 154 | 3 <sup>rd</sup> June  | Monday    | Theory Exam     |   |
| 155 | 4 <sup>th</sup> June  | Tuesday   | Theory Exam     | Monthly Review Meeting for May 2019   |
| 156 | 5 <sup>th</sup> June  | Wednesday | Holiday         | Id-UI-Fitar   |
| 157 | 6 <sup>th</sup> June  | Thursday  | Theory Exam     |   |
| 158 | 7 <sup>th</sup> June  | Friday    | Theory Exam     |   |
| 159 | 8 <sup>th</sup> June  | Saturday  | Theory Exam     |   |
| 160 | 9 <sup>th</sup> June  | Sunday    | Weekly off      |   |
| 161 | 10 <sup>th</sup> June | Monday    | Theory Exam     |   |
| 162 | 11 <sup>th</sup> June | Tuesday   | Practical Exam  |   |
| 163 | 12 <sup>th</sup> June | Wednesday | Practical Exam  |   |

|     |                       |           |                |  |
|-----|-----------------------|-----------|----------------|--|
| 164 | 13 <sup>th</sup> June | Thursday  | Practical Exam |  |
| 165 | 14 <sup>th</sup> June | Friday    | Practical Exam |  |
| 166 | 15 <sup>th</sup> June | Saturday  | Practical Exam |  |
| 167 | 16 <sup>th</sup> June | Sunday    | Weekly off     |  |
| 168 | 17 <sup>th</sup> June | Monday    | Semester Break |  |
| 169 | 18 <sup>th</sup> June | Tuesday   | Semester Break |  |
| 170 | 19 <sup>th</sup> June | Wednesday | Semester Break |  |
| 171 | 20 <sup>th</sup> June | Thursday  | Semester Break |  |
| 172 | 21 <sup>st</sup> June | Friday    | Semester Break |  |
| 173 | 22 <sup>nd</sup> June | Saturday  | Weekly off     |  |
| 174 | 23 <sup>rd</sup> June | Sunday    | Weekly off     |  |
| 175 | 24 <sup>th</sup> June | Monday    | Semester Break |  |
| 176 | 25 <sup>th</sup> June | Tuesday   | Semester Break |  |
| 177 | 26 <sup>th</sup> June | Wednesday | Semester Break |  |
| 178 | 27 <sup>th</sup> June | Thursday  | Semester Break |  |
| 179 | 28 <sup>th</sup> June | Friday    | Semester Break |  |
| 180 | 29 <sup>th</sup> June | Saturday  | Weekly off     | Announcement of End Semester Result (Even Semester-Jan to June 2019) |
| 181 | 30 <sup>th</sup> June | Sunday    | Weekly off     |  |

# Activity Calendar

| Activity                                | Jul<br>y                 | Au<br>g                  | Se<br>p                  | Oc<br>t                  | No<br>v                  | De<br>c                  | Jan                      | Feb                      | Ma<br>r                  | Ap<br>r                  | Ma<br>y                  | Ju<br>n                  | Jul<br>y                 |
|---|--------------------------|--------------------------|--------------------------|--------------------------|--------------------------|--------------------------|--------------------------|--------------------------|--------------------------|--------------------------|--------------------------|--------------------------|--------------------------|
| World Peace Day                         |                          |                          |                          |                          |                          |                          | <input type="checkbox"/> |                          |                          |                          |                          |                          |                          |
| Student registration                    | <input type="checkbox"/> | <input type="checkbox"/> |                          |                          |                          |                          | <input type="checkbox"/> |                          |                          |                          |                          |                          |                          |
| Allocation of Projects                  |                          | <input type="checkbox"/> |                          |                          |                          |                          | <input type="checkbox"/> |                          |                          |                          |                          |                          |                          |
| Industrial (Summer/Winter) Training     |                          |                          |                          |                          |                          | <input type="checkbox"/> | <input type="checkbox"/> | <input type="checkbox"/> |                          |                          |                          | <input type="checkbox"/> |                          |
| National Youth Day Celebration          |                          |                          |                          |                          |                          |                          | <input type="checkbox"/> |                          |                          |                          |                          |                          |                          |
| Netaji Subhash Chandra Bose Jayanti     |                          |                          |                          |                          |                          |                          | <input type="checkbox"/> |                          |                          |                          |                          |                          |                          |
| Republic Day Celebration                |                          |                          |                          |                          |                          |                          | <input type="checkbox"/> |                          |                          |                          |                          |                          |                          |
| Students Training for placement         | <input type="checkbox"/> | <input type="checkbox"/> | <input type="checkbox"/> | <input type="checkbox"/> | <input type="checkbox"/> |                          | <input type="checkbox"/> | <input type="checkbox"/> | <input type="checkbox"/> | <input type="checkbox"/> |                          |                          | <input type="checkbox"/> |
| Seminars/Workshop                       | <input type="checkbox"/> | <input type="checkbox"/> | <input type="checkbox"/> | <input type="checkbox"/> | <input type="checkbox"/> |                          | <input type="checkbox"/> | <input type="checkbox"/> | <input type="checkbox"/> | <input type="checkbox"/> | <input type="checkbox"/> |                          | <input type="checkbox"/> |
| Students Activities (Extra Curricular)  |                          | <input type="checkbox"/> | <input type="checkbox"/> | <input type="checkbox"/> | <input type="checkbox"/> |                          | <input type="checkbox"/> | <input type="checkbox"/> | <input type="checkbox"/> | <input type="checkbox"/> | <input type="checkbox"/> |                          |                          |
| Annual Sports                           |                          |                          |                          |                          |                          |                          | <input type="checkbox"/> |                          |                          |                          |                          |                          |                          |
| Winter Carnival                         |                          |                          |                          |                          |                          |                          | <input type="checkbox"/> |                          |                          |                          |                          |                          |                          |
| Faculty Development Programme           |                          |                          |                          |                          |                          |                          | <input type="checkbox"/> |                          |                          |                          |                          | <input type="checkbox"/> |                          |
| Saraswati Puja Celebration              |                          |                          |                          |                          |                          |                          |                          | <input type="checkbox"/> |                          |                          |                          |                          |                          |
| International Mother Language Day       |                          |                          |                          |                          |                          |                          |                          | <input type="checkbox"/> |                          |                          |                          |                          |                          |
| National Science Day                    |                          |                          |                          |                          |                          |                          |                          | <input type="checkbox"/> |                          |                          |                          |                          |                          |
| Distribution of Assignments             |                          | <input type="checkbox"/> | <input type="checkbox"/> | <input type="checkbox"/> |                          |                          |                          | <input type="checkbox"/> | <input type="checkbox"/> | <input type="checkbox"/> |                          |                          |                          |
| Submission of Q paper- Unit/Slot Test   |                          |                          | <input type="checkbox"/> |                          | <input type="checkbox"/> |                          |                          | <input type="checkbox"/> | <input type="checkbox"/> | <input type="checkbox"/> |                          |                          |                          |
| Publication of Unit/Slot Test Result    |                          |                          |                          | <input type="checkbox"/> | <input type="checkbox"/> |                          |                          |                          | <input type="checkbox"/> | <input type="checkbox"/> |                          |                          |                          |
| Declaration of attendance %             |                          | <input type="checkbox"/> | <input type="checkbox"/> | <input type="checkbox"/> | <input type="checkbox"/> |                          |                          | <input type="checkbox"/> | <input type="checkbox"/> | <input type="checkbox"/> | <input type="checkbox"/> |                          |                          |
| Industry visit                          |                          | <input type="checkbox"/> | <input type="checkbox"/> | <input type="checkbox"/> | <input type="checkbox"/> |                          |                          | <input type="checkbox"/> | <input type="checkbox"/> | <input type="checkbox"/> |                          |                          |                          |
| International Women's Day               |                          |                          |                          |                          |                          |                          |                          |                          | <input type="checkbox"/> |                          |                          |                          |                          |
| World Health Day                        |                          |                          |                          |                          |                          |                          |                          |                          |                          | <input type="checkbox"/> |                          |                          |                          |
| Earth Day Celebration                   |                          |                          |                          |                          |                          |                          |                          |                          |                          | <input type="checkbox"/> |                          |                          |                          |
| Birthday of Dr. B R Ambedkar            |                          |                          |                          |                          |                          |                          |                          |                          |                          | <input type="checkbox"/> |                          |                          |                          |
| Ayushman Bharat Diwas                   |                          |                          |                          |                          |                          |                          |                          |                          |                          | <input type="checkbox"/> |                          |                          |                          |
| International Labour Day (Worker's Day) |                          |                          |                          |                          |                          |                          |                          |                          |                          |                          | <input type="checkbox"/> |                          |                          |
| Rabindra Jayanti Celebration            |                          |                          |                          |                          |                          |                          |                          |                          |                          |                          | <input type="checkbox"/> |                          |                          |
| Mother's Day Celebration                |                          |                          |                          |                          |                          |                          |                          |                          |                          |                          | <input type="checkbox"/> |                          |                          |
| Eid Celebration                         |                          |                          |                          |                          |                          |                          |                          |                          |                          |                          | <input type="checkbox"/> |                          |                          |
| Anti-tobacco Day                        |                          |                          |                          |                          |                          |                          |                          |                          |                          |                          | <input type="checkbox"/> |                          |                          |
| World Environment Day                   |                          |                          |                          |                          |                          |                          |                          |                          |                          |                          |                          | <input type="checkbox"/> |                          |
| World Anti- Drugs Day                   |                          |                          |                          |                          |                          |                          |                          |                          |                          |                          |                          | <input type="checkbox"/> |                          |
| International Yoga Day                  |                          |                          |                          |                          |                          |                          |                          |                          |                          |                          |                          | <input type="checkbox"/> |                          |

|  |                          |                          |                          |                          |                          |                          |                          |                          |                          |                          |                          |                          |                          |
|--|--------------------------|--------------------------|--------------------------|--------------------------|--------------------------|--------------------------|--------------------------|--------------------------|--------------------------|--------------------------|--------------------------|--------------------------|--------------------------|
| Independence Day Celebration                       |                          | <input type="checkbox"/> |                          |                          |                          |                          |                          |                          |                          |                          |                          |                          |                          |
| World Photography Day                              |                          | <input type="checkbox"/> |                          |                          |                          |                          |                          |                          |                          |                          |                          |                          |                          |
| Muharram Celebration                               |                          | <input type="checkbox"/> |                          |                          |                          |                          |                          |                          |                          |                          |                          |                          |                          |
| Teacher's Day Celebration                          |                          |                          | <input type="checkbox"/> |                          |                          |                          |                          |                          |                          |                          |                          |                          |                          |
| Vishwakarma Puja Celebration                       |                          |                          | <input type="checkbox"/> |                          |                          |                          |                          |                          |                          |                          |                          |                          |                          |
| Gandhi Jayanti Celebration                         |                          |                          |                          | <input type="checkbox"/> |                          |                          |                          |                          |                          |                          |                          |                          |                          |
| Durga Puja Celebration                             |                          |                          |                          | <input type="checkbox"/> |                          |                          |                          |                          |                          |                          |                          |                          |                          |
| Chhath Puja Celebration                            |                          |                          |                          | <input type="checkbox"/> |                          |                          |                          |                          |                          |                          |                          |                          |                          |
| <b>Activity</b>                                    | <b>Jul y</b>             | <b>Au g</b>              | <b>Se p</b>              | <b>Oc t</b>              | <b>No v</b>              | <b>De c</b>              | <b>Jan</b>               | <b>Feb</b>               | <b>Ma r</b>              | <b>Ap r</b>              | <b>Ma y</b>              | <b>Ju n</b>              | <b>Jul y</b>             |
| National Unity Day                                 |                          |                          |                          | <input type="checkbox"/> |                          |                          |                          |                          |                          |                          |                          |                          |                          |
| Diwali Celebration                                 |                          |                          |                          |                          | <input type="checkbox"/> |                          |                          |                          |                          |                          |                          |                          |                          |
| National Education Day                             |                          |                          |                          |                          | <input type="checkbox"/> |                          |                          |                          |                          |                          |                          |                          |                          |
| Guru Parab Celebration                             |                          |                          |                          |                          | <input type="checkbox"/> |                          |                          |                          |                          |                          |                          |                          |                          |
| National Cancer Awareness Day                      |                          |                          |                          |                          | <input type="checkbox"/> |                          |                          |                          |                          |                          |                          |                          |                          |
| National Mathematics Day                           |                          |                          |                          |                          |                          | <input type="checkbox"/> |                          |                          |                          |                          |                          |                          |                          |
| World Computer Literacy Day                        |                          |                          |                          |                          |                          | <input type="checkbox"/> |                          |                          |                          |                          |                          |                          |                          |
| National Pollution Control Day                     |                          |                          |                          |                          |                          | <input type="checkbox"/> |                          |                          |                          |                          |                          |                          |                          |
| Christmas Celebration                              |                          |                          |                          |                          |                          | <input type="checkbox"/> |                          |                          |                          |                          |                          |                          |                          |
| Submission of faculty load                         |                          |                          |                          |                          | <input type="checkbox"/> |                          |                          |                          |                          |                          | <input type="checkbox"/> |                          |                          |
| Submission of choice of electives                  |                          |                          |                          |                          | <input type="checkbox"/> |                          |                          |                          |                          |                          | <input type="checkbox"/> |                          |                          |
| Submission of lecture plan                         |                          |                          |                          |                          | <input type="checkbox"/> |                          |                          |                          |                          |                          |                          | <input type="checkbox"/> |                          |
| Preparation of Routine                             |                          |                          |                          |                          | <input type="checkbox"/> |                          |                          |                          |                          |                          |                          | <input type="checkbox"/> |                          |
| Submission of tuition fees for next semester       |                          |                          |                          |                          |                          | <input type="checkbox"/> |                          |                          |                          |                          |                          | <input type="checkbox"/> |                          |
| Review of Semester project progress                |                          |                          | <input type="checkbox"/> |                          | <input type="checkbox"/> |                          |                          |                          | <input type="checkbox"/> | <input type="checkbox"/> |                          |                          |                          |
| Preparation of invigilation list for semester exam |                          |                          |                          |                          | <input type="checkbox"/> |                          |                          |                          |                          |                          | <input type="checkbox"/> |                          |                          |
| Collection of students feedback                    |                          |                          |                          |                          | <input type="checkbox"/> | <input type="checkbox"/> |                          |                          |                          |                          | <input type="checkbox"/> |                          |                          |
| Parent Teacher Meeting                             |                          | <input type="checkbox"/> | <input type="checkbox"/> | <input type="checkbox"/> | <input type="checkbox"/> |                          |                          |                          | <input type="checkbox"/> |                          | <input type="checkbox"/> |                          |                          |
| National/International Conference                  |                          | <input type="checkbox"/> |                          | <input type="checkbox"/> |                          |                          | <input type="checkbox"/> |                          |                          |                          |                          |                          |                          |
| Activities by students chapter                     |                          | <input type="checkbox"/> | <input type="checkbox"/> | <input type="checkbox"/> | <input type="checkbox"/> | <input type="checkbox"/> |                          | <input type="checkbox"/> | <input type="checkbox"/> | <input type="checkbox"/> | <input type="checkbox"/> |                          |                          |
| GATE Coaching                                      |                          | <input type="checkbox"/> | <input type="checkbox"/> | <input type="checkbox"/> | <input type="checkbox"/> |                          |                          | <input type="checkbox"/> | <input type="checkbox"/> | <input type="checkbox"/> | <input type="checkbox"/> |                          |                          |
| Sardar Jodh Singh Trophy – S                       |                          |                          |                          |                          |                          |                          |                          | <input type="checkbox"/> |                          |                          |                          |                          |                          |
| Sardar Jodh Singh Trophy – F                       |                          |                          |                          |                          |                          |                          |                          | <input type="checkbox"/> |                          |                          |                          |                          |                          |
| Technical Symposium / Tech Fest                    |                          |                          |                          |                          |                          |                          |                          | <input type="checkbox"/> |                          |                          |                          |                          |                          |
| Cultural Fest                                      |                          |                          |                          |                          |                          |                          |                          | <input type="checkbox"/> |                          |                          |                          |                          |                          |
| Requisition for Man power and Infrastructure       |                          |                          |                          |                          | <input type="checkbox"/> |                          |                          |                          |                          |                          | <input type="checkbox"/> |                          |                          |
| Farewell   |                          |                          |                          |                          |                          |                          |                          |                          |                          |                          | <input type="checkbox"/> |                          |                          |
| Induction Program                                  |                          | <input type="checkbox"/> |                          |                          |                          |                          |                          |                          |                          |                          |                          |                          |                          |
| Alumni Meet (Institute level)                      |                          |                          |                          |                          |                          | <input type="checkbox"/> |                          |                          |                          |                          |                          |                          |                          |
| Tree Plantation Day                                | <input type="checkbox"/> |                          |                          |                          |                          |                          |                          |                          |                          |                          |                          |                          | <input type="checkbox"/> |



|                                       |                          |                          |                          |  |                          |                          |  |  |                          |  |  |                          |  |                          |
|---------------------------------------|--------------------------|--------------------------|--------------------------|--|--------------------------|--------------------------|--|--|--------------------------|--|--|--------------------------|--|--------------------------|
| No Plastic Day                        | <input type="checkbox"/> |                          |                          |  |                          |                          |  |  |                          |  |  |                          |  | <input type="checkbox"/> |
| Sadbhavna Divas                       |                          | <input type="checkbox"/> |                          |  |                          |                          |  |  |                          |  |  |                          |  |                          |
| National Engineer's Day               |                          |                          | <input type="checkbox"/> |  |                          |                          |  |  |                          |  |  |                          |  |                          |
| Constitution Day                      |                          |                          |                          |  | <input type="checkbox"/> |                          |  |  |                          |  |  |                          |  |                          |
| Raksha Bandhan                        |                          | <input type="checkbox"/> |                          |  |                          |                          |  |  |                          |  |  |                          |  |                          |
| International Human Rights Day        |                          |                          |                          |  |                          | <input type="checkbox"/> |  |  |                          |  |  |                          |  |                          |
| International Energy Conservation Day |                          |                          |                          |  |                          | <input type="checkbox"/> |  |  |                          |  |  |                          |  |                          |
| Book Fair Performance                 |                          |                          |                          |  |                          |                          |  |  | <input type="checkbox"/> |  |  |                          |  |                          |
| Vigilance Awareness Week              |                          |                          | <input type="checkbox"/> |  |                          |                          |  |  |                          |  |  |                          |  |                          |
| NiT Jewels                            |                          |                          |                          |  |                          |                          |  |  |                          |  |  | <input type="checkbox"/> |  |                          |

# *Induction Programme for First year students*

Narula Institute of Technology organises an Induction **Programme** for all the academic batches every year before the commencement of the classes of each of the Programme for THREE long weeks' duration. It is mandatory for all the First year's students to attend the Induction Programme. The primary aim of this programme is to give a brief introduction about the courses and curriculum. There are interactions with renowned academicians and industry personnel. Alumni network members of NiT are also invited for some discussions with the students. Finally, the event ends with the motivational and Yoga sessions for the benefit of the mental and physical health of the students.

The sessions generally constitute of:

1. Welcome addresses from the Principal of NiT, Dignitaries, Invited guests and Head of the Departments.
2. The event is named as "Swagatam" and the welcome note is given to both the parents and students.
3. The session includes interaction with renowned academicians, researchers, and Industry personnel.
4. Also sessions include interaction with renowned Alumni members of the associations, and present students of the institution.
5. For the benefit of the student's outlook, the Yoga sessions and motivational sessions are conducted.
6. There are sessions on "Know your subject" based on basics of mathematics, physics and chemistry.
7. Finally, there are cultural activities and fashion shows organised for the first year students.

# Curriculum and Syllabus

## Curriculum for B.Tech For 1<sup>st</sup> Year

### Under Autonomy

(GR A: ECE, EE, EIE, BME;

GR B: CSE, IT, ME, CE, FT)

1<sup>st</sup>  
Semester

| Sl No  | Course Code | Paper Code        | Theory  | Contact Hours /Week |   |   |           | Credit Points |
|--|-------------|-------------------|---|---------------------|---|---|-----------|---------------|
|  |             |                   |   | L                   | T | P | Total     |               |
| <b>A. THEORY</b>   |             |                   |   |                     |   |   |           |               |
| 1  | BS          | M 101             | Mathematics -I  | 3                   | 1 | 0 | 4         | 4             |
| 2  | BS          | CH 101/<br>PH 101 | Chemistry (Gr. A) /<br>Physics- I (Gr. B)   | 3                   | 0 | 0 | 3         | 3             |
| 3  | ES          | EE 101/<br>EC 101 | Basic Electrical Engineering (Gr. A) /<br>Basic Electronics Engineering (Gr. B)         | 3                   | 0 | 0 | 3         | 3             |
| 4  | HS          | HU 101            | English   | 2                   | 0 | 0 | 2         | 2             |
| <b>Total of Theory</b>   |             |                   |   |                     |   |   | <b>12</b> | <b>12</b>     |
| <b>B. PRACTICAL</b>  |             |                   |   |                     |   |   |           |               |
| 5  | BS          | CH 191/<br>PH191  | Chemistry Lab (Gr. A) / Physics- I Lab (Gr. B)  | 0                   | 0 | 3 | 3         | 1.5           |
| 6  | ES          | EE 191/<br>EC 191 | Basic Electrical Engineering Lab (Gr. A) /<br>Basic Electronics Engineering Lab (Gr. B) | 0                   | 0 | 3 | 3         | 1.5           |
| 7  | ES          | ME 191/<br>ME 192 | Engineering Graphics & Design (Gr A) /<br>Workshop/Manufacturing Practices (Gr-B)       | 0                   | 0 | 3 | 3         | 1.5           |
| 8  | PROJ        | PR 191            | PROJECT-IA  | 0                   | 0 | 1 | 1         | 0.5           |
| 9  | PROJ        | PR 192            | PROJECT-IB  | 0                   | 0 | 1 | 1         | 0.5           |
| <b>C. MANDATORY ACTIVITIES / COURSES</b>                             |             |                   |   |                     |   |   |           |               |
| 8  | MC          | MC 181            | Induction Program   | 0                   | 0 | 0 | 0         |               |
| <b>Total of Theory, Practical &amp; Mandatory Activities/Courses</b> |             |                   |   |                     |   |   | <b>23</b> | <b>17.5</b>   |

#Student need to select any two projects (Total Credit: 0.5+0.5=1)

2<sup>nd</sup> Semester

| Sl No  | Course Code | Paper Code        | Theory  | Credit Hours /Week |   |   |           | Credit Points |
|--|-------------|-------------------|---|--------------------|---|---|-----------|---------------|
|  |             |                   |   | L                  | T | P | Total     |               |
| <b>A. THEORY</b>   |             |                   |   |                    |   |   |           |               |
| 1  | BS          | M 201             | Mathematics –II   | 3                  | 1 | 0 | 4         | 4             |
| 2  | BS          | CH 201/<br>PH 201 | Chemistry - (Gr. B) /<br>Physics – I (Gr. A)  | 3                  | 0 | 0 | 3         | 3             |
| 3  | ES          | EE 201/<br>EC 201 | Basic Electrical Engineering (Gr. B) /<br>Basic Electronics Engineering (Gr. A)         | 3                  | 0 | 0 | 3         | 3             |
| 4  | ES          | CS 201            | Programming for Problem Solving   | 3                  | 0 | 0 | 3         | 3             |
| 5  | ES          | ME 201            | Engineering Mechanics   | 3                  | 0 | 0 | 3         | 3             |
| <b>Total of Theory</b>   |             |                   |   |                    |   |   | <b>16</b> | <b>16</b>     |
| <b>B. PRACTICAL</b>  |             |                   |   |                    |   |   |           |               |
| 6  | ES          | CS291             | Programming for Problem Solving Lab   | 0                  | 0 | 3 | 3         | 1.5           |
| 7  | BS          | CH 291/<br>PH 291 | Chemistry Lab (Gr. B) /<br>Physics - I Lab (Gr. A)                                      | 0                  | 0 | 3 | 3         | 1.5           |
| 8  | ES          | EE 291/<br>EC 291 | Basic Electrical Engineering Lab (Gr. B) /<br>Basic Electronics Engineering Lab (Gr. A) | 0                  | 0 | 3 | 3         | 1.5           |
| 9  | ES          | ME 291/<br>ME 292 | Engineering Graphics & Design (Gr B) /<br>Workshop/Manufacturing Practice (Gr-A)        | 0                  | 0 | 3 | 3         | 1.5           |
| 10   | HS          | HU 291            | Language Lab  | 0                  | 0 | 2 | 2         | 1             |
| 11   | PROJ        | PR 291            | Project-II  | 0                  | 0 | 1 | 1         | 0.5           |
| 12   | PROJ*       | PR 292            | Inovative Activities-I  | 0                  | 0 | 0 | 0         | 0.5           |
| <b>C. MANDATORY ACTIVITIES / COURSES</b>                             |             |                   |   |                    |   |   |           |               |
| 13   | MC          | MC 281            | NSS/ Physical Activities/Meditation &<br>Yoga/Photography/ Nature Club                  | 0                  | 0 | 0 | 3         |               |
| <b>Total of Theory, Practical &amp; Mandatory Activities/Courses</b> |             |                   |   |                    |   |   | <b>34</b> | <b>24</b>     |

**#Student need to select any ONE project (Total Credit: 0.5+0.5=1)**

For Second to Eight semester: Follow the website link of the department.

| <b>Department</b>                           | <b>Website Link for Curriculum &amp; Syllabus</b>   |
|---|---|
| Computer Science and Engineering            | <a href="https://www.nit.ac.in/pdf/cse-ug-r-18.pdf">https://www.nit.ac.in/pdf/cse-ug-r-18.pdf</a> |
| Electronics and Communication Engineering   | <a href="https://www.nit.ac.in/pdf/ece-pg.pdf">https://www.nit.ac.in/pdf/ece-pg.pdf</a>           |
| Information Technology                      | <a href="https://www.nit.ac.in/pdf/it-ug-18.pdf">https://www.nit.ac.in/pdf/it-ug-18.pdf</a>       |
| Electrical Engineering                      | <a href="https://www.nit.ac.in/pdf/ee-pg.pdf">https://www.nit.ac.in/pdf/ee-pg.pdf</a>             |
| Civil Engineering                           | <a href="https://www.nit.ac.in/pdf/ce-pg.pdf">https://www.nit.ac.in/pdf/ce-pg.pdf</a>             |
| Mechanical Engineering                      | <a href="https://www.nit.ac.in/pdf/me-ug-r-18.pdf">https://www.nit.ac.in/pdf/me-ug-r-18.pdf</a>   |
| Electronics and Instrumentation Engineering | <a href="https://www.nit.ac.in/pdf/eie-ug-r-18.pdf">https://www.nit.ac.in/pdf/eie-ug-r-18.pdf</a> |

## **Curriculum for M.Tech**

### **Under Autonomy**

Follow the website link of the department:

| <b>Department</b>                         | <b>Website Link for Curriculum &amp; Syllabus</b>                                       |
|---|---|
| Computer Science and Engineering          | <a href="https://www.nit.ac.in/pdf/ce-pg.pdf">https://www.nit.ac.in/pdf/ce-pg.pdf</a>   |
| Electronics and Communication Engineering | <a href="https://www.nit.ac.in/pdf/ece-pg.pdf">https://www.nit.ac.in/pdf/ece-pg.pdf</a> |
| Electrical Engineering-Power System       | <a href="https://www.nit.ac.in/pdf/ee-pg.pdf">https://www.nit.ac.in/pdf/ee-pg.pdf</a>   |
| Civil Engineering-Structural Engineering  | <a href="https://www.nit.ac.in/pdf/ce-pg.pdf">https://www.nit.ac.in/pdf/ce-pg.pdf</a>   |

## Curriculum for Diploma

| <b>Department</b>                              | <b>Website Link for Curriculum &amp; Syllabus</b>   |
|--|---|
| Electronics and Tele-Communication Engineering | <a href="https://www.nit.ac.in/pdf/ece-diploma.pdf">https://www.nit.ac.in/pdf/ece-diploma.pdf</a> |
| Electrical Engineering                         | <a href="https://www.nit.ac.in/pdf/ee-diploma.pdf">https://www.nit.ac.in/pdf/ee-diploma.pdf</a>   |
| Civil Engineering                              | <a href="https://www.nit.ac.in/pdf/ce-diploma.pdf">https://www.nit.ac.in/pdf/ce-diploma.pdf</a>   |

# Student Support System

## Scholarship Schemes

### GOVERNMENT SCHOLARSHIP SCHEMES AVAILABLE FROM THE INSTITUTE

The Institute has the facility of providing scholarship schemes under central and state Government respectively to the students enrolled in Graduate and Post Graduate programs. The students apply to the scholarships as per notification from the Government. The list of Government scholarship schemes with web link are mentioned below:

| Name of the scheme                 | Link  |
|------------------------------------|---|
| National Scholarship Portal        | <a href="https://scholarships.gov.in/">https://scholarships.gov.in/</a>   |
| Prime Ministers Scholarship Scheme | <a href="https://www.desw.gov.in/prime-ministers-scholarship-scheme-pmss">https://www.desw.gov.in/prime-ministers-scholarship-scheme-pmss</a> |
| Swami Vivekananda Scholarship      | <a href="https://svmcm.wbhed.gov.in/">https://svmcm.wbhed.gov.in/</a>   |
| Kanyasree Scholarship              | <a href="https://wbkanyashree.gov.in/kp_4.0/index.php">https://wbkanyashree.gov.in/kp_4.0/index.php</a>                                       |
| Aikasree Scholarship               | <a href="https://wbmdfcscholarship.org/">https://wbmdfcscholarship.org/</a>   |
| Ekalyan                            | <a href="https://ekalyan.cgg.gov.in/">https://ekalyan.cgg.gov.in/</a>   |
| West Bengal Freeship Scheme        | <a href="https://wbhed.gov.in/wbfs/">https://wbhed.gov.in/wbfs/</a>   |
| Oasis Scholarship                  | <a href="https://oasis.gov.in/">https://oasis.gov.in/</a>   |
| Vidyalakshmi Scholarship           | <a href="https://www.vidyalakshmi.co.in/Students/about-us">https://www.vidyalakshmi.co.in/Students/about-us</a>                               |
| Vidyasarathi Scholarship           | <a href="https://www.vidyasaarathi.co.in/Vidyasaarathi/AboutUs">https://www.vidyasaarathi.co.in/Vidyasaarathi/AboutUs</a>                     |
| Pragati And Saksham Scholarship    | <a href="https://www.aicte-pragati-saksham-gov.in/">https://www.aicte-pragati-saksham-gov.in/</a>   |

### SCHOLARSHIP SCHEMES OF THE INSTITUTE

The Institute has the facility of providing scholarship schemes to the students enrolled in Graduate and Post Graduate programs from non-government organizations. The students apply for the scholarships schemes and the applications are thoroughly reviewed by the governing body of the Institute and

approvals are set accordingly. The list of the scholarship schemes offered by the institute are given below:

| Name of the scheme                                  | Description  |
|---|--|
| <b>Freeship schemes</b>                             | The Institute has decided to offer <b>Full Freeship and Half Freeship</b> to the students belonging to poor economic background. To avail this scholarship, the students need to submit relevant documents relating to family income which are to be verified thoroughly before granting the free ship. Students, who are receiving Scholarship/Assistantship from other external funding agencies or under TFW scheme are not considered under this scholarship scheme  |
| <b>Institute UG Scholarship</b>                     | The Institute offers a scholarship of Rs.60,000/- @ Rs.10,000/- per semester to the students who have studied their three years Diploma in Engineering in the institute.   |
| <b>Institute PG Scholarship</b>                     | <ul style="list-style-type: none"> <li>➤ The Institute offers a scholarship of 20% on tuition fees i.e Rs.10000/- per semester is applicable to the external students who have scored DGPA of 7.0 and above in their last qualifying examination for pursuing M.Tech. Assistance ship of Rs.3000 per month will also be given to M.Tech students (M.Tech-Civil Engineering is not eligible for the stipend).</li> <li>➤ The Institute offers a scholarship of 20% of the tuition fees to any student who has completed a B.Tech programme from this institute and secures admission to M.Tech program in the same institute. Assistance ship of Rs.3000 per month will also be given to M.Tech students (M.Tech-Civil Engineering is not eligible for the stipend).</li> <li>➤ The Institute offers a scholarship of 20% on tuition fees i.e Rs.10000/- per semester is applicable to the external students who have scored DGPA of 7.0 and above in their last qualifying examination for pursuing MCA .</li> </ul> |
| <b>Sikh Scholarship</b>                             | The Sikh students of the Institute also receive financial assistance from Gurudwara who provide financial support to the Sikh students from economically poor family background. Students belong to Sikh community may apply for 50% free ship/scholarship on their tuition fees. 50% free ship/scholarship is provided only on tuition fees. The scholarship is only applicable from second semester.   |
| <b>Scholarship Scheme for the North East States</b> | <p>Scholarship of Rs.40, 000/- will be given for the Admission in Lateral Entry (B.Tech courses) for students from the North East Region.</p> <p>The details of the Scholarship policy are mentioned below:</p> <ol style="list-style-type: none"> <li>1. Candidate must have valid Aadhaar Card.</li> <li>2. Candidate must secure minimum requisite qualification for admission in B.Tech Lateral course.</li> <li>3. Scholarship will be available @ Rs. 7000/- each for 3<sup>rd</sup> &amp; 4<sup>th</sup> Semester in ( 2<sup>nd</sup> year ) and Rs. 6500/- each from 5<sup>th</sup> to 8<sup>th</sup> Semester ( 3<sup>rd</sup> &amp; 4<sup>th</sup> Year) from the existing fees structure.</li> <li>4. To continue availing the existing scholarship, the student must not</li> </ol>  |



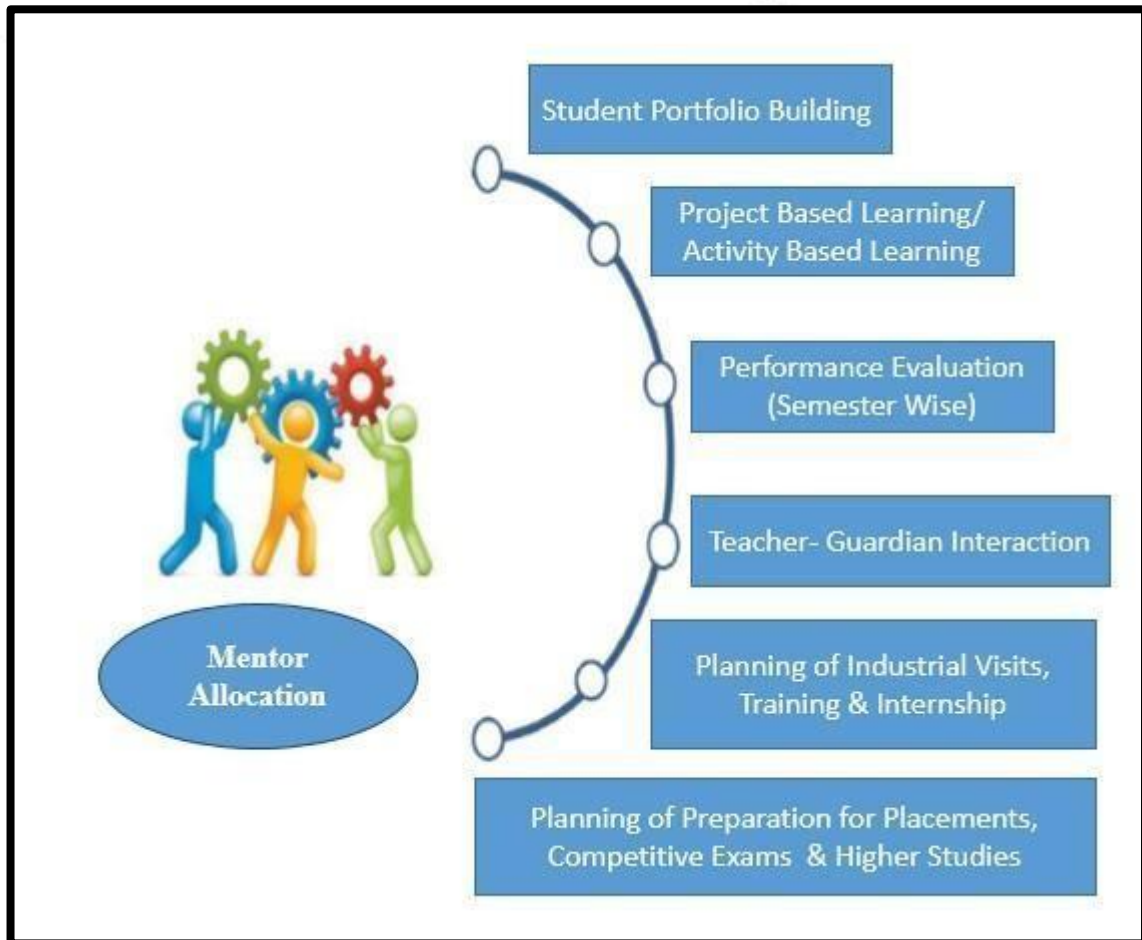
|                                    | have any year lag  |                   |               |                   |                    |                    |                    |                     |                    |           |                    |
|------------------------------------|--|-------------------|---------------|-------------------|--------------------|--------------------|--------------------|---------------------|--------------------|-----------|--------------------|
| <b>Sibling Scholarship Scheme</b>  | Scholarship of <b>20%</b> on the tuition fee will be given to the immediate sibling of existing and former students for B.Tech, M.Tech and MCA programs. Proof of relation is required to be submitted.  |                   |               |                   |                    |                    |                    |                     |                    |           |                    |
| <b>Employee Scholarship Scheme</b> | <p>This Scholarship Scheme is open to the children/immediate sibling of the permanent Employees working in any of the unit of the institute and on a regular payroll. The employee should have minimum 3 years of continuous work experience in the institute as of 30th June of the concerned Academic session. Scholarship will be available to only one child/immediate sibling of the employee.</p> <p>The scholarship % will be as following:</p> <table border="1"> <thead> <tr> <th>Tenure of Service</th> <th>Scholarship %</th> </tr> </thead> <tbody> <tr> <td>3 years - 5 years</td> <td>10% on Tuition fee</td> </tr> <tr> <td>5 years - 10 years</td> <td>15% on Tuition fee</td> </tr> <tr> <td>10 years - 15 years</td> <td>25% on Tuition fee</td> </tr> <tr> <td>15 years+</td> <td>40% on Tuition fee</td> </tr> </tbody> </table> | Tenure of Service | Scholarship % | 3 years - 5 years | 10% on Tuition fee | 5 years - 10 years | 15% on Tuition fee | 10 years - 15 years | 25% on Tuition fee | 15 years+ | 40% on Tuition fee |
| Tenure of Service                  | Scholarship %  |                   |               |                   |                    |                    |                    |                     |                    |           |                    |
| 3 years - 5 years                  | 10% on Tuition fee   |                   |               |                   |                    |                    |                    |                     |                    |           |                    |
| 5 years - 10 years                 | 15% on Tuition fee   |                   |               |                   |                    |                    |                    |                     |                    |           |                    |
| 10 years - 15 years                | 25% on Tuition fee   |                   |               |                   |                    |                    |                    |                     |                    |           |                    |
| 15 years+                          | 40% on Tuition fee   |                   |               |                   |                    |                    |                    |                     |                    |           |                    |

### NON GOVERNMENT SCHOLARSHIP SCHEMES

The Institute has the facility of providing scholarship schemes to the students enrolled in Graduate and Post Graduate programs from non-government organizations. The students apply for the scholarships schemes and the applications are thoroughly reviewed by the governing body of the Institute and approvals are set accordingly. The list of Non-Government scholarship schemes from the Institute are mentioned below:

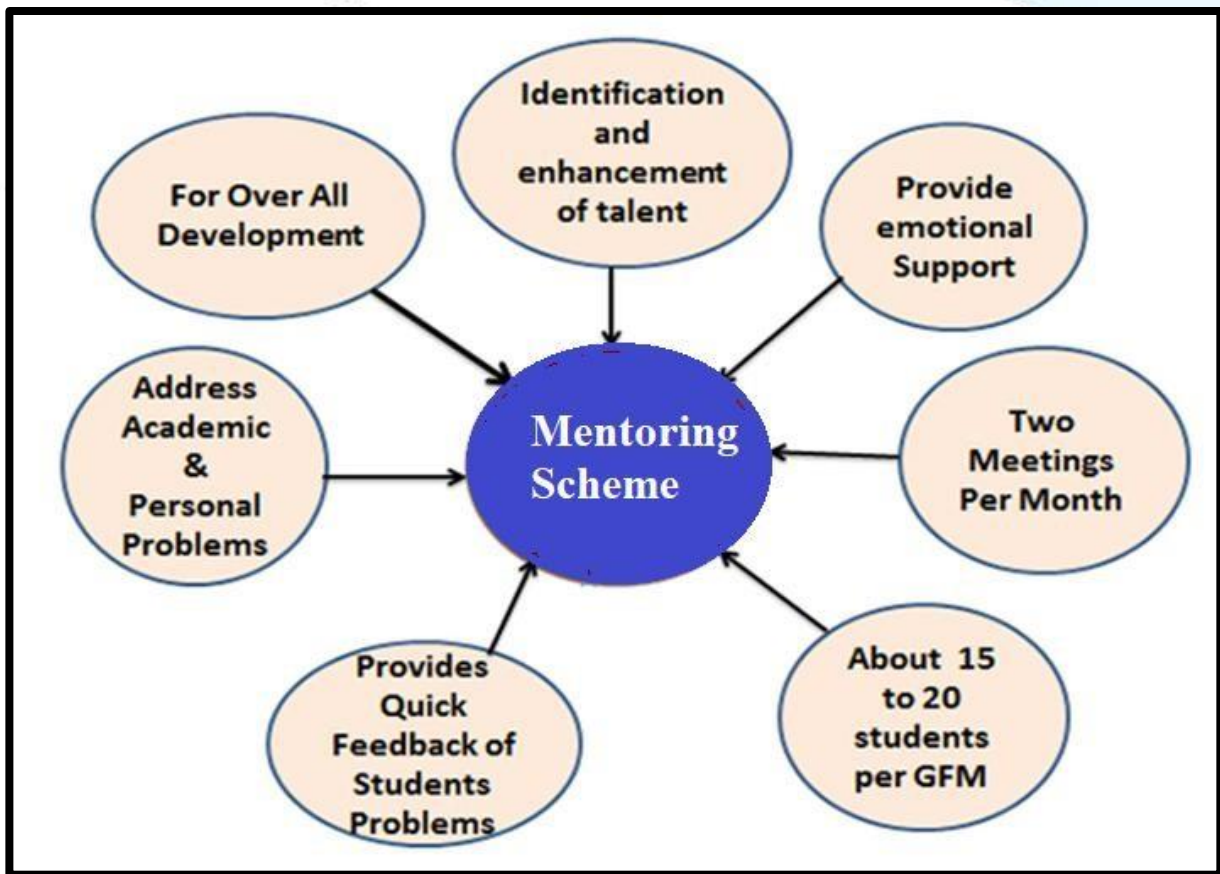
| Name of the scheme   | Description/Link  |
|--|---|
| <b>Sitaram Jindal Scholarship</b>  | <a href="https://www.sitaramjindalfoundation.org/importantinstructions.php">https://www.sitaramjindalfoundation.org/importantinstructions.php</a> |
| <b><u><a href="https://www.nit.ac.in/pdf/birla-scholarship-2020.pdf">Privamvada Birla Scholarship - 2020</a></u></b> | <a href="https://www.nit.ac.in/pdf/birla-scholarship-2020.pdf">https://www.nit.ac.in/pdf/birla-scholarship-2020.pdf</a>                           |

# Mentoring Scheme



Mentoring is to provide guidance, support and encouragement to the students. Mentoring has been defined in many ways but it is a system of structured guidance whereby faculty shares knowledge, skills and experiences to help students to their lives and careers. In other words, mentoring allows the mentee to explore novel ideas in confidence. It is a chance to analyse more closely on a student's issues, opportunities and ambitions.

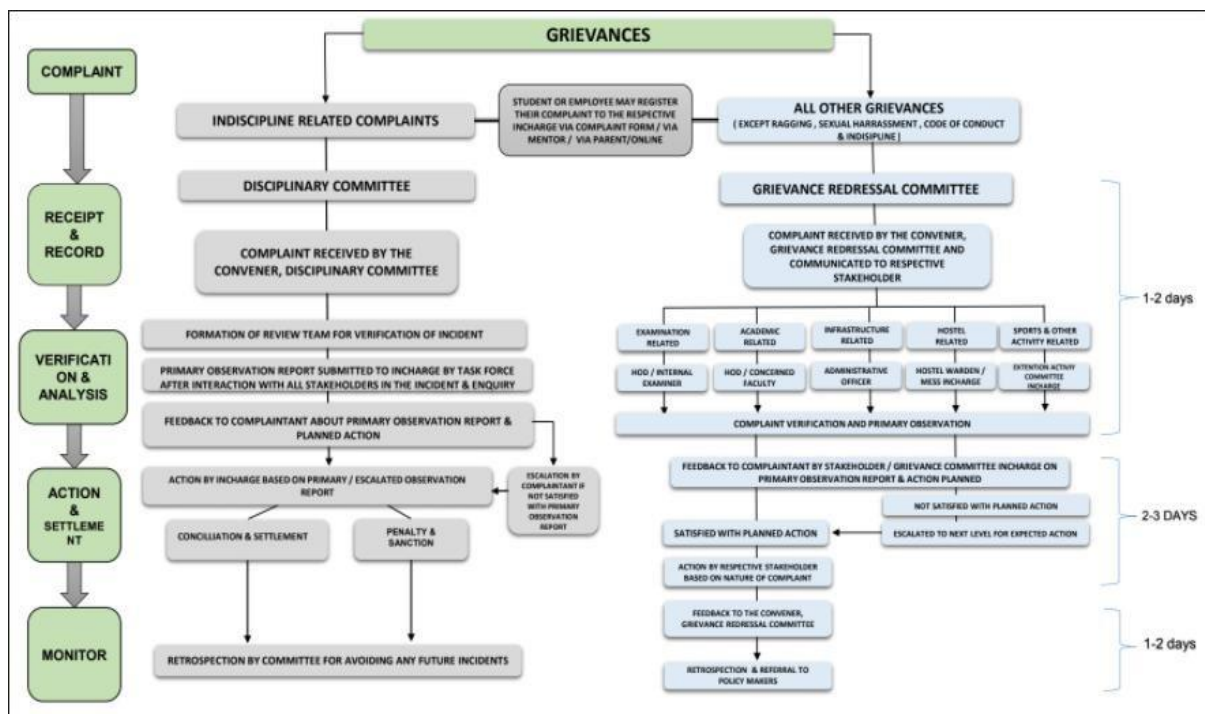
At NiT, the departments strongly follow the structure of the mentoring system shown in the figure above. The mentee will be highly benefited from the mentoring system.



The Figure above shows the benefits of the mentoring Scheme for the students. However, if any issue of the mentee is not solved at this level, the mentee can report to the head of the department to the Registrar of the Institute and the Principal of the Institute eventually.

# Grievance Redressed Mechanism

A Grievance is any discontent or dissatisfaction, whether expressed or not, whether valid or not, arising out of anything connected with the Institute that a student thinks, believes, or even feels, is unfair, unjust or inequitable. The objective of the mechanism is to Link with a well-defined Disciplinary System to make it acceptable to all.



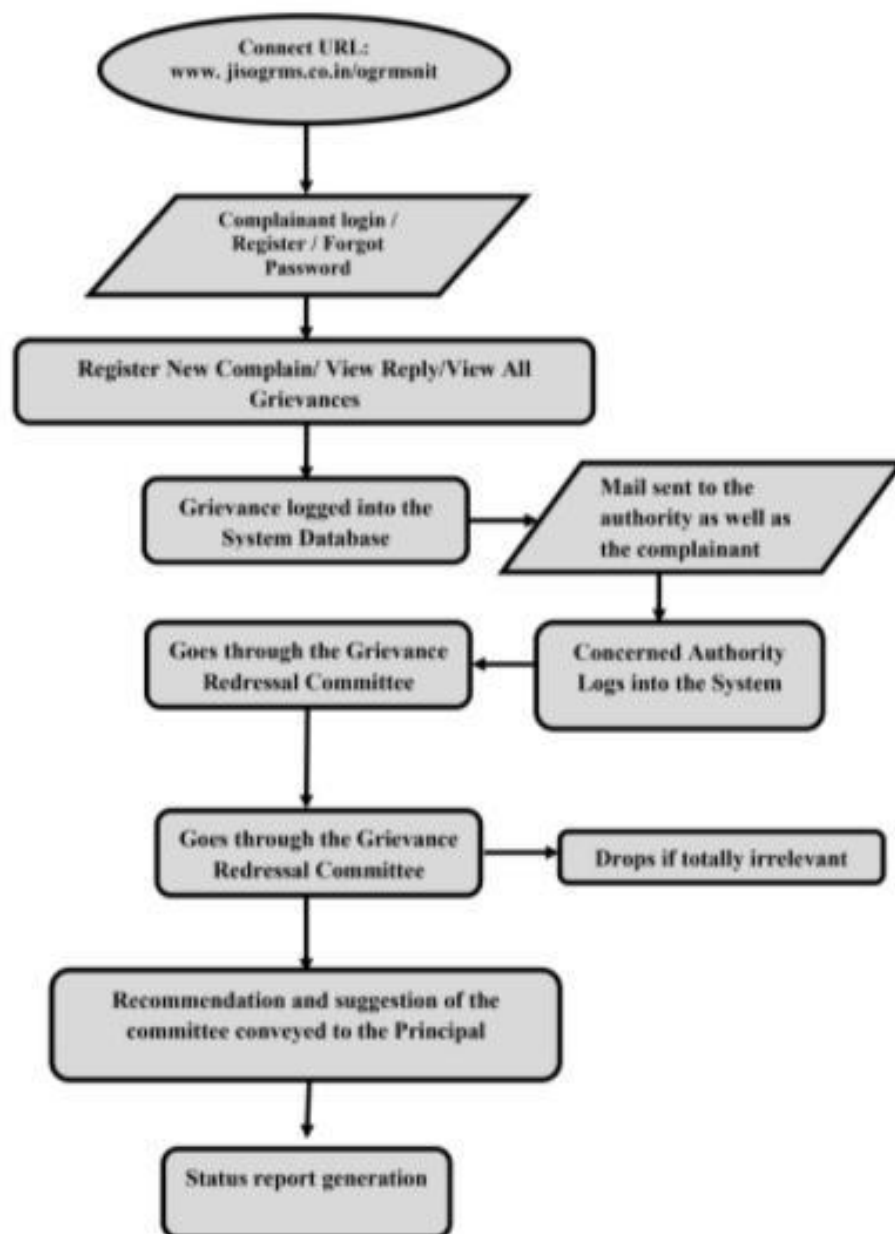
## Method:

- ✓ General invitations to students informally drop in the reception area informally over their grievance. Students can also drop their anonymous complaints.
- ✓ They may even present the grievance through the official contact numbers of the institution.

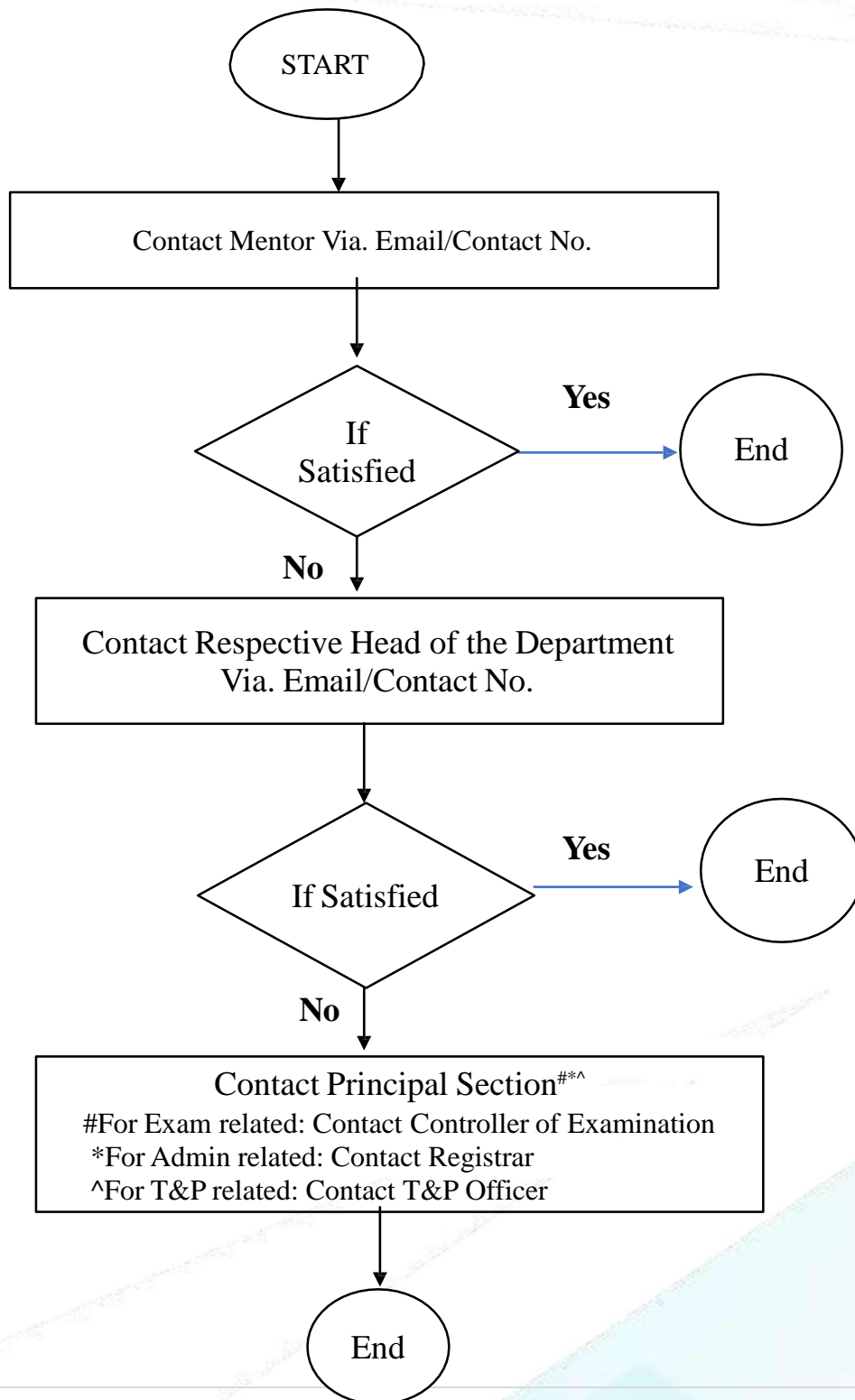
- ✓ Through mentor and other feedback schemes, the opinion surveys may be conducted for better understanding.
- ✓ Through separate emails to HOD, Registrar, Principal or to the Top Management directly.
- ✓ A fully working online grievance redressed management system is available on the institute website.

Link: <http://jisogrms.co.in/ogrmsnit/>

Process Flow Diagram for Online Grievance Redressal Management System of Narula Institute of Technology



For any enquiry or informing about any problems/issues within the campus, the process to be followed is shown in the diagram below:



# Code of Conduct for Students

In order to maintain a good academic environment, students also have a responsibility to maintain a high standard of behaviour. A student shall have to conform to a high standard of discipline and conduct himself within and outside Narula Institute of Technology (NiT) in a manner befitting the student of an institution of National importance. He shall have seriousness of purpose and shall, in every way, train himself to lead a life of earnest endeavour and cooperation.

Narula Institute of Technology (NIT) wishes to instill virtues of cleanliness, cooperation, honesty, integrity and sense of responsibility among the students, inside the Institute as well as outside. All NiT students are expected to read, understand and follow the Student Code of Conduct. Students should also be aware that not following the Student Code of Conduct could lead to disciplinary consequences such as suspension from Institute, imposing of fine and/ or exclusion from the Institute.

1. Students are expected to maintain the highest standards of discipline and dignified manner of behaviour inside as well as outside the College campus. They shall abide by the rules and regulations of the College and should act in a way that highlights the discipline and esteem of the College.
2. A five day working schedule from Monday to Friday is followed. Classes are scheduled from 10.00 a.m. to 5.30 p.m. for 1st shift and 2.10 p.m. to 7.30 p.m. for 2nd shift. Students should enter the campus in time. Maximum grace of 15 minutes will be allowed. Institute gate will be closed after that. Once the students enter the campus they shall not be allowed to leave before the end of the academic classes or after obtaining prior approval from HOD.

3. It is imperative that the student attends the Institute from the day of opening to the last day of each semester during the academic year.
4. Students must be regular in attendance for theory and practical classes. In case the attendance falls short of 75% for each, theory and practical, students will not be allowed to sit for examination.
5. Students must maintain punctuality while attending all the theory and practical classes.
6. Students must put-on a college I-Card on every day without fail and attend the college in full college uniform failing which they will not be allowed entry in the college.
7. Students should specially note that if the student fails to complete the semester academic work regularly and to the entire satisfaction of the Head of the Department, his/her term will not be granted and will not be allowed to appear for the semester examination.
8. The student should note that he/she is responsible to the authorities of the Institute not only for his / her conduct in the premises of the Institute but also for his/her general behaviour outside.
9. Use of tobacco & alcohol, chewing of betel leaves and chewing gums etc. are strictly prohibited within the premises of the Institute.
10. Use of mobile phones in the classroom is banned. The mobile phones shall be kept in silent mode inside the Institute. Use of earphones is strictly prohibited inside the college premises.
11. Students are strictly forbidden from organizing or attending any unauthorised meeting in the Institute, or collecting money for any purpose without the prior written permission of the Principal.
12. Planned absence from classes and instigating the students to remain absent or to go on strike is a serious breach of discipline and may result in expulsion from the Institute.
13. Students are forbidden from organizing Groups, Unions or Associations based on caste, colour, creed, language, nationality or political ideology within the campus.
14. Any reported, observed, objectionable conduct within or outside the premises of the Institute, will make him / her liable for strict disciplinary action.



15. Students should respect and be courteous towards the members of the faculty as well as all the employees of the Institute.
16. The Institute maintains absolute discipline and students violating this are liable for severe penalties including expulsion.
17. Students expelled on grounds of indiscipline will not be entitled to any certification or refund of fees and caution deposits.
18. Ragging of any sort is strictly prohibited. Students found guilty of this are liable for severe punishment including dismissal from the Institute / Hostel. The matter will be referred to the police, as the Government has declared ragging a criminal offence.
19. Any student found responsible for any damage to the Institute properties (fittings, furniture and equipment etc.) will be punished severely and the cost of damages along with the fine will be recovered from the students. The Institute reserves the right to expel such students.
20. No student shall take part in any anti-social or rebellious activities. No student shall be a member of any group, organization or association not connected with the Institute, without the prior written permission of the Principal.
21. Students should conduct themselves at all times in a fitting manner so as to bring credit to themselves and to the Institute.
22. Students should observe the safety regulations in the workshop and laboratories.
23. Students should take care of tools, apparatus or other equipment given to them and should preserve the cleanliness of the laboratories and the workshop.
24. Students should avail themselves of all opportunities to acquire engineering knowledge and skills during their period of study.
25. Any dress code violation noticed within the campus will attract a punishment and could initiate further disciplinary actions.
26. Students are expected to maintain silence in the academic buildings to maintain the decorum and any deviant behaviour such as hooting, whistling, loitering etc. will be treated as an instance of indiscipline.
27. For independent study, students are expected to use the classrooms, library or the demarcated areas of the academic building and shall not

- resort to sitting in staircases or circulation areas where they could interfere with the free movement.
28. Access to academic buildings beyond the above timing and on holidays without written permission from the concerned HOD will be treated as a case of indiscipline.
  29. Keep the campus neat and clean. Do not put any waste anywhere in the campus except in the waste baskets kept.
  30. It is strongly advised to refrain from activities such as scribbling or noting on walls, doors or furniture which could deface the college and destroy the academic ambiance.
  31. Students are not permitted to arrange any unauthorized celebrations and decorations of any magnitude in the campus.
  32. Students are not permitted to distribute or display (both physically and electronically) material such as notices, banners etc. in the campus without the permission of the competent authority.
  33. Students who intend to represent the college in intercollegiate events shall take prior permission from the concerned head of the department and the selection will be based on parameters such as academic performance, attendance, character, existing academic pressure and competence of the student in the proposed event for participation.
  34. Students should strive hard and spare no effort to maintain peace in the campus. If a student gets proven in a case of gross misconduct such as violence, riots or disorderly behaviour, fraud, misappropriation of funds, immoral conduct directed on a fellow student or faculty or staff of Narula Institute of Technology (NiT), He will be subject to immediate expulsion from the Institute.
  35. In matters of academic discipline, the decision of the Principal / Managing Trustee will be final.

# Examination System and Regulations

A comprehensive digital infrastructure has been installed at NIT for automation of Examination Processes starting from Application Form to Distribution of Result from the Academic Year 2018-19. The summary of the online processes is given below.

1. Creation / Update of Database of Program Details according to Syllabus.
2. Online Registration of Students, Examiners and Head-Examiners.
3. Online Application, Attendance Approval and Finance Approval for Semester Examination.
4. Online Paper-setting with CO mapping and Answer Key, Online Moderation in dedicated Computer Lab and Question Paper printing secured with 128 bit PKI.
5. Digitization of Hard Copy answer scripts and online Evaluation System.
6. Online Result and printing of Grade Cards.

## Schedule Examination Planning

UG Course (4 years):

| Semester | Commencement of Course         | 1 <sup>st</sup> Slot Test        | 2 <sup>nd</sup> Slot Test       | End semester Exam            | Tentative Publication of Results |
|----------|--------------------------------|----------------------------------|---------------------------------|------------------------------|----------------------------------|
| 1        | 1 <sup>st</sup> wk. of August  | 2 <sup>nd</sup> wk. of September | 3 <sup>rd</sup> wk. of November | 1 <sup>st</sup> wk. December | 1 <sup>st</sup> wk. February     |
| 2        | 1 <sup>st</sup> wk. of January | 2 <sup>nd</sup> wk. of March     | 1 <sup>st</sup> wk. of May      | 3 <sup>rd</sup> wk. of May   | End of July                      |
| 3        | 1 <sup>st</sup> wk. of July    | 2 <sup>nd</sup> wk. of September | 3 <sup>rd</sup> wk. of November | 1 <sup>st</sup> wk. December | 1 <sup>st</sup> wk. February     |
| 4        | 1 <sup>st</sup> wk. of January | 2 <sup>nd</sup> wk. of March     | 1 <sup>st</sup> wk. of May      | 3 <sup>rd</sup> wk. of May   | End of July                      |
| 5        | 3 <sup>rd</sup> wk. of July    | 2 <sup>nd</sup> wk. of September | 3 <sup>rd</sup> wk. of November | 1 <sup>st</sup> wk. December | 1 <sup>st</sup> wk. February     |
| 6        | 1 <sup>st</sup> wk. of January | 2 <sup>nd</sup> wk. of March     | 1 <sup>st</sup> wk. of May      | 3 <sup>rd</sup> wk. of May   | End of July                      |
| 7        | 3 <sup>rd</sup> wk. of July    | 2 <sup>nd</sup> wk. of September | 3 <sup>rd</sup> wk. of November | 1 <sup>st</sup> wk. December | 1 <sup>st</sup> wk. February     |
| 8        | 1 <sup>st</sup> wk. of January | 2 <sup>nd</sup> wk. of March     | 1 <sup>st</sup> wk. of May      | 3 <sup>rd</sup> wk. of May   | End of June                      |

PG Course (2 years):

| Semester | Commencement of Course         | 1 <sup>st</sup> Slot Test        | 2 <sup>nd</sup> Slot Test       | End semester Exam            | Tentative Publication of Results |
|----------|--------------------------------|----------------------------------|---------------------------------|------------------------------|----------------------------------|
| 1        | 1 <sup>st</sup> wk. of August  | 2 <sup>nd</sup> wk. of September | 3 <sup>rd</sup> wk. of November | 1 <sup>st</sup> wk. December | 1 <sup>st</sup> wk. February     |
| 2        | 1 <sup>st</sup> wk. of January | 2 <sup>nd</sup> wk. of March     | 1 <sup>st</sup> wk. of May      | 3 <sup>rd</sup> wk. of May   | End of July                      |
| 3        | 1 <sup>st</sup> wk. of July    | 2 <sup>nd</sup> wk. of September | 3 <sup>rd</sup> wk. of November | 1 <sup>st</sup> wk. December | 1 <sup>st</sup> wk. February     |
| 4        | 1 <sup>st</sup> wk. of January | 2 <sup>nd</sup> wk. of March     | 1 <sup>st</sup> wk. of May      | 3 <sup>rd</sup> wk. of May   | End of July                      |

### Rules of Examinations:

1. Each discipline of the B.Tech / M.Tech / MCA program consists of the following types of items:
  1. Theory items
  2. Practical items
  - 1.3. Sessional items
2. The schedule of these items along with their credit points for each semester shall be as Section 6 below.
  1. At the end of each semester, there shall be an examination (here-in- after called end-semester examination) conducted by the College as per program announced by the Controller of Examinations.
  2. Back-paper Examinations, if any, shall be held with the normal end-semester examination.
  3. There shall be no separate supplementary examination under normal condition for I/II year B.Tech and MCA and M.Tech students. For the purpose of degree only supplementary examination for 5<sup>th</sup>, 6<sup>th</sup>, 7<sup>th</sup> and 8<sup>th</sup> semester for B.Tech & MCA students shall be held within one month of the publication of last semester examination results.

### 3. Evaluation of course items:

The evaluation of course items listed in Section 5.1 shall be done as per the following guidelines:

1. **Theory Items: 100 percentage point/marks**

Each item under this classification shall be evaluated on the basis of 100 percentage point/marks, sub-divided into the following 2 categories:

1. End-Semester Examination: **70 points/marks**

Operational Guidelines:

1. There shall be more than one internal and external Paper setter to be decided by the respective Board of Studies. The internal paper setters are necessarily the subject teachers engaged in teaching the subjects in the College. External Paper setters are to be chosen from outside the College who are engaged in academic and/or research activities in any academic/research Institute of repute, Government or Non- Government/Self-financing type. The Paper setters shall be appointed by the Controller of Examinations (COE).
2. There shall be a panel of external Moderators to be decided by the respective Board of Studies. One Moderator shall be selected from this panel and appointed by the Controller of Examinations for each subject.
3. Examiners shall be appointed from both internal faculty engaged in teaching the respective subjects and external faculty engaged in academic and/or research activities in any academic/research Institute of repute, Government or Non-Government/Self-financing type. Internal faculty engaged in teaching the respective subjects shall be appointed as Head Examiner for checking, scrutinizing and re-evaluating answer scripts of each theory subject.
4. Checking/Evaluation of scripts shall be completed and award list shall be submitted within a reasonable time as stipulated by the COE after the completion of examination to the Controller of Examinations.
5. The entire evaluation work and subsequent encoding/decoding and tabulation work shall be completed within a reasonable time after the completion of the examination as decided by the Controller of Examinations.
6. The remuneration of Paper Setters, Moderators, Examiners and Head Examiners shall be proposed by the Finance Committee and approved by the Academic Council.

2. Slot tests/Class tests/Assignments/attendance: **30 points/marks regarded as *Internal Assessment***

Operational Guidelines:

1. 30 marks are distributed as follows:
  - Internal Tests: 15 marks
  - Assignment & Quiz: 10 marks
  - Attendance: 5 marks
2. The 1st Slot Test examination shall be centrally conducted by the Examination Section. The Second Slot Test examination shall be coordinated by respective departments and conducted in regular class periods.
3. The Controller of Examinations shall ordinarily set the Slot Tests examination schedule and announce examination dates as per academic calendar of the college.
4. Slot Test examination scripts shall be checked / evaluated by the subject teacher and duly filled-up marks slips shall be submitted to the Controller's office well before the commencement of End-semester examinations. The answer scripts of the Slot Tests conducted for two semesters shall be kept as records by the course teachers.
5. The Class Tests & Quiz shall be conducted by course teachers. A minimum of one Class Test per course module as per syllabus shall be conducted by the course teacher. Quiz shall be conducted for every lecture as per Lesson Plan. A minimum of one assignment per course module shall be assigned by course teachers.
6. Tutorial periods shall be used by course teachers for Continuous Evaluation.
7. Assignments are to be given in all of the following forms (each form develops unique skills within the students):
  1. Problem Solving—Numeric and conceptual
  2. Term paper – A systematic report on a topic to be submitted under the guidance of faculty members after doing necessary exploration of knowledge on the topic.
  3. Mini project – A small project on the topic or problem assigned by the teacher and covered by the course being taught. The duration of the project must not be more than one month.
  4. Presentation & Seminar – The student will prepare a PPT on a topic relevant to the course and present with PPT for 10 minutes

under the guidance of the course teacher.

3.2. **Practical Items: 100 percentage point/marks**

Every item in this category shall be evaluated out of 100 percentage points, divided under two broad categories as detailed below:

3.2.1. End-Semester Examination: **60 points/marks (20+40)**

Operational Guidelines:

1. There shall be Viva-voce examination in each Laboratory item, essentially in presence of an External Examiner, to be nominated by the respective Board of Studies.
  2. The course teacher/internal examiner shall assist the External Examiner during such Viva-voce examination. The assessment of student performance in viva-voce shall be done in consultation with the external examiner. (20 Marks)
  3. The course teacher shall randomly assign experiments to be conducted by groups of students during the laboratory examination (one experiment by a group of not more than 4 students). The assessment of the student performance for experiment shall be done in consultation with the external examiner. (40 Marks)
2. Laboratory and Sessional : **40 points/marks**

Operational Guidelines:

1. The course teacher(s) shall be the sole authority for finalizing the award under this item.
2. The course teacher shall assess the students on the basis of Attendance & Regularity, Preparedness for Conduct of Experiment, Initiative to Learn / Interact and presentation of Laboratory Report, its Regularity in Submission and Conduct etc.
3. Continuous Evaluation sheet shall be maintained for each student in each laboratory class.
4. The course teacher shall finalize the award (out of 40 marks) before the End-semester Examination based on the Continuous Evaluation sheets for each student and submit the same under scaled cover to the Controller of Examinations.

### **3.3. Assessment of Online courses, Internships, Employability Skills & Projects (Sessional Items): 100 percentage point/marks.**

Explanation / Operational Guidelines:

Sessional items are those where the formal Institutional contact hours are not specified, (viz. Online courses, Internships, Co-curricular/Extra-curricular activities etc.), or there are no formal End-semester examinations of the written kind, (viz. Comprehensive Viva-voce, Seminar, Industrial Visits, etc.). For all items under these categories, the evaluation shall be done in presence of at least one External Expert of the relevant field, as nominated by the respective Board of Studies.

The norms for assessment for sessional items may vary from item to item. A broad guideline is appended below:

1. For items which are conducted outside the Institution viz. Practical Training, Co-curricular/Extra-curricular activities, Industrial visits, if any, etc. – assessment may be made on the basis of Item Supervisor’s assessment, Report submitted by the student if any, Participation and Attendance and Viva-voce examination conducted by the concerned teacher/supervisor and an External Examiner selected from a panel nominated by the respective Board of Studies.
2. Items conducted in the Department/Institution/College viz. Projects, Mini Projects, seminar, comprehensive Viva-voce – may be evaluated by as many faculty as possible of the Department including the Head of the Department and preferably in presence of an External Expert, based on Participation and Attendance in the Project work, Performance in online courses completed, Presentation and Content of the Seminar presented, Capability to Address the Questions by Participants.

The award list for this item shall be finalized by the members of Faculty and the External Examiners and the Head of the Department shall forward the statement of such marks in sealed cover to the Controller of Examinations.



#### 4. Grading System and Declaration of Result:

##### 1. The Grading System:

##### Rules Governing the Grading System and Declaration of Results:

1. A seven point Grading System on a base of 10 shall be followed in the University. Categorization of these grades and their correlation shall be as under:

| Qualification | Grade | Score on 100 Percentage Points | Point |
|---------------|-------|--------------------------------|-------|
| Outstanding   | O'    | 100 to 90                      | 10    |
| Excellent     | E'    | 89 to 80                       | 9     |
| Very Good     | A'    | 79 to 70                       | 8     |
| Good          | B'    | 69 to 60                       | 7     |
| Fair          | C'    | 59 to 50                       | 6     |
| Below Average | D'    | 49 to 40                       | 5     |
| Failed        | F'    | Below 40                       | 2     |

2. A transitory letter grade I (carrying points 2) shall be introduced for cases where the candidate fails to appear in End Semester Examination(s) and where the results are incomplete. This grade shall automatically be converted into appropriate grade(s) as and when the results are complete.
3. No student shall be allowed to receive/complete the final degree with any 'I' or 'F' grade.
4. There shall be no class/division awarded to a student either at semester or degree level.
5. The college shall declare the DGPA of a student on the final semester grade sheet/card. The DGPA is defined as under:
  1. A student's level of competence shall be recognized by a **GRADE POINT AVERAGE** to be specified as:

SGPA – Semester Grade Point Average

YGPA – Yearly Grade Point Average

DGPA – Degree Grade Point Average

2. Definition of items:
  1. POINT – Integer qualifying each letter grade.
  2. CREDIT – Integer signifying the relative emphasis of individual course item(s) in a semester as indicated by the course structure and detailed syllabus.
- 4.1.5.2.3.  $\text{CREDIT POINT} = (7.1.5.2.1) \times (7.1.5.2.2) \text{ or } (\text{POINT}) \times (\text{CREDIT})$
4. **CREDIT INDEX** =  $\sum$  Credit Point of course items in a semester.
5. GRADE POINT AVERAGE =

---

But, it is always qualified by the specified period reference, as detailed below:

SEMESTER GRADE POINT AVERAGE (SGPA)

= \_\_\_\_\_

YEARLY GRADE POINT AVERAGE (YGPA)

= \_\_\_\_\_ for an academic year.

CUMULATIVE GRADE POINT AVERAGE (CGPA)

= \_\_\_\_\_, where n=8 for 4 years program,

n=6 for 3 years program,  
n=4 for 2 years program.

DEGREE GRADE POINT AVERAGE (DGPA)

For 4 Years Degree Course

---

For Lateral Entry Students

---

For 3 Years Degree Course

---

For 2 Years Degree Course

---

4.2. In order to pass the B.Tech/M.Tech/MCA program, a candidate must obtain at least D grades in each of the Theory, Practical and Sessional items and a DGPA of 6.0 within a period of 7 academic years from the date of admission to the program.

## **5. Conduct of End Semester Examination**

1. COE shall notify the dates of examination form fill-up normally a week in advance. The examination form fill-up shall be completed one week before the conduct of the examinations.
2. The process of examination form fill-up by students shall be through an online system as far as practicable. The Accounts section shall approve the eligibility of students based on semester fee clearance. HODs shall approve the eligibility of students based on attendance and disciplinary actions.
3. The fees for the examination form fill-up shall be proposed by the Finance Committee and approved by the Academic Council.
4. COE shall be responsible for smooth and proper conduct of examination in the Institute.

## **6. Central Assessment**

1. Assessment of answer scripts of semester end examination shall be done in a central online system by internal as well as external examiners.
2. Answer key shall be prepared by Paper Setters / Head Examiners for all subjects and uploaded in the online system as far as practicable.
3. Step-wise marks shall be awarded for each solved question.
4. The evaluator shall put only tick / cross marks in the answer script. He/She shall place the marks for answers in specified spaces provided in the online evaluation system. He shall put any comments / feedback on the answer script in the specified box for the purpose.
5. He / She shall put a signature with his / her name in a separate marked foil printed from the online evaluation system.

## **6. Semester End Examination Result**

Results will usually be declared after one month from the date of the last examination. After all grievances are addressed, the final result will be declared by the COE office.

YGPA shall be indicated on the even semester grade card/sheet.

## **8. Post Publication Scrutiny (PPS)**

If a student is aggrieved by the marks declared, he/she may apply for scrutiny and recounting of marks in answer books by paying a prescribed fee.

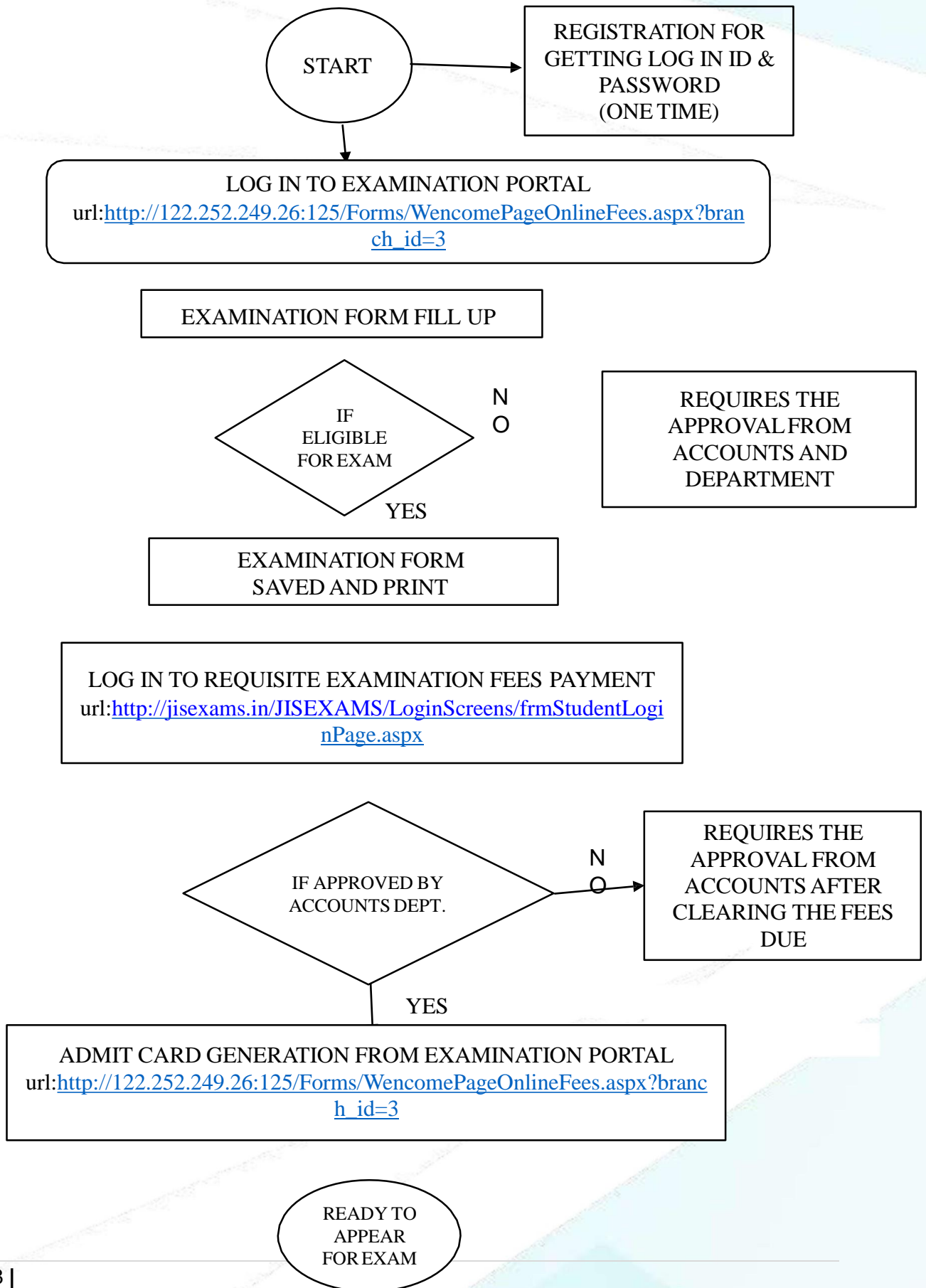
1. Scrutiniser shall see that the examiner attempted the questions considering the internal choice and shall check whether the marks given by the evaluator are as per the marks allotted to the questions.
2. Scrutiniser shall see all questions and sub questions are valued and awarded marks.
3. Scrutiniser shall report to COE in case of any discrepancy, and COE shall get it corrected.

## **9. Post Publication Review (PPR)**

If a student is aggrieved by the marks declared, he/she may apply for the revaluation of the answer book by paying a prescribed fee. All the cases

of revaluation where the change in marks occur, they should get corrected.

Process Diagram to be followed for Exam Form Fillup of Semester Examination are given below



# *National and International Collaborations*

## **1. National Collaboration with Institution of Electronics and Telecommunication Engineers (IETE)**

The Institution of Electronics and Telecommunication Engineers (IETE) is India's leading recognized professional society devoted to the advancement of Science and Technology of Electronics, Telecommunication & IT, founded in 1953. The IETE Students' Forum of NIT has been set up with 52 student members from ECE dept through the involvement of faculty members of the department. The IETE Centre, Kolkata region provided support and coordination in the establishment of the forum.

The department of Electronics and Communication Engineering has a collaboration with ISF to give a platform for the student members to exchange ideas by organizing/participating in technical programs and activities. They would get the benefit for technical visits / practical training / project work in R&D laboratories/ industries that increases their spirit of self-reliance and professionalism.

## **2. National Collaboration with Jadavpur University**

Narula Institute of Technology is pleased to sign an AGREEMENT with the IC Design and Fabrication Centre under the Department of Electronics & Tele-Communication Engineering of JADAVPUR UNIVERSITY in December 2019 Kolkata.

Prof. Subir Kumar Sarkar of ETCE Department, Jadavpur University and Registrar, JU represented Jadavpur University for signing the MOU while NIT was represented by Prof. (Dr.) M. R Kanjilal and HOD, ECE Dept, Dr. Saradindu Panda.

The key focus of the AGREEMENT is towards collaborative exchanges of knowledge, Certification Course on training of present and future batches of

students of NIT for contributing positively in the national talent pool, exchange of ideas, networks and resources between Jadavpur university and NIT.



### 3. National Collaboration with National Highway Authority of India

A MOU has been signed between National Highway Authority of India and Narula Institute of Technology on 26/11/2020

NiT adopted a stretch between Dankuni and Palsit of NHS as a voluntary initiative under ambit of Institutional Social Responsibilities (ISR), Energy Audit, Green Audit & Environmental Audit have been carried out in the Institute in the Month of January- February, 2021. ISO 9001- 2015 certification has been done in March 2021.





## 4. International Collaboration with Asian Institute of Technology, Bangkok

A MOU has been signed between AIT, Bangkok and JIS Group of educational initiatives on 16th March, 2015. Every year, since 2015, 3<sup>rd</sup> year B.Tech students and faculty members visit Asian Institute of Technology, Bangkok as part of their 2 weeks winter education camp. The students who scored above 8.75SGPA throughout their course are selected and after appearing for the Qualifying Test, attend the program. Students went through live interactive classes, projects and assignments from one of the top faculty members at AIT, Bangkok.



## 5. NiT Participated in the 2nd "Innompic Games,2018" at the University of Kuala Lumpur, Malaysia

Narula Institute of Technology has participated in the 2<sup>nd</sup> Innompic Games,2018 which was held from 27th September-30th September, 2018. Six number of students-Sayantana Mitra, Supravat Roy, Uday Sankar Saha, Avipsa Basak,Srijita Dutta, Ramrick Ganguly along with 2 Mentors: Mr. Kaushik Sarkar and Ms. Susmita Das has participated in the event.

INNOMPIC Games 2018 was a platform where the students from all around the globe were given a chance to show their technical efficiency and skills to develop an innovative business model to grow as an entrepreneur which is called the "Global Innovation Acceleration".



## 6. International Collaboration:

### **NiT Participated in the International Knowledge Sharing Week at Moscow, Russia from 25<sup>th</sup> September- 6<sup>th</sup> October 2019.**

NiT students and faculty members attended the International Knowledge sharing week at Moscow, Russia from 25<sup>th</sup> September, 2019- 6<sup>th</sup> October, 2019. The students had training and skill development sessions, universities and public visits, cultural programmes etc. They also visited ‘Bunker 42’, a secret nuclear bunker at Taganskaya that was made during World War II. They went through training at Science Park, MSU, on hard skills, artificial intelligence, big data & internet of things. The students learned a lot from this visit and had an enriching experience from the experts around the world.



# Clubs @ NiT

There is an active student council in the institute. The Student Council is formed in the month of July (after the commencement of the academic year). The registrations to the clubs are done online and the portfolios are nominated by the college authority. The primary aim of the constitution of such a council is to develop leadership qualities and make the students socially responsible. The activities related to various technological and non-technological oriented projects help to enhance their hidden talent and creativity which are exposed through different clubs.

The Clubs with faculty in charge with their contact details are as follows:

| Name of club         | Faculty Incharge        | Contact Details and email ID   |
|----------------------|-------------------------|--|
| Science Club         | Dr. Sarbani Ganguly     | Ph:9433088784<br>Email: <a href="mailto:sarbani.ganguli@nit.ac.in">sarbani.ganguli@nit.ac.in</a>         |
| Tech Club            | Mr.Pranab Hazra         | Ph:7003481575<br>Email: <a href="mailto:pranabhazra2017@nit.ac.in">pranabhazra2017@nit.ac.in</a>         |
| Mathematics Club     | Dr. Avishek Chakraborty | Ph:8981348890<br>Email: <a href="mailto:avishek.chakraborty@nit.ac.in">avishek.chakraborty@nit.ac.in</a> |
| Art & Designing Club | Mrs. Dipu Mistry        | Ph: 9432504856/9123636498<br>Email: <a href="mailto:dipu.mistry@nit.ac.in">dipu.mistry@nit.ac.in</a>     |
| Literary Club        | Ms. Rajasi Ray          | 9339147460<br><a href="mailto:rajasi.ray@nit.ac.in">rajasi.ray@nit.ac.in</a>                             |
| Photography Club     | Mr. Soumen Ghosh        | Ph:9874873362<br>Email: <a href="mailto:soumen.ghosh@nit.ac.in">soumen.ghosh@nit.ac.in</a>               |
| Music Club           | Payel Mondal            | Ph: 99903486143<br>Email: <a href="mailto:payel.mondal@nit.ac.in">payel.mondal@nit.ac.in</a>             |
| Sports Club          | Dr. Subhram Das         | Ph:9836588070<br>Email: <a href="mailto:subhram.das@nit.ac.in">subhram.das@nit.ac.in</a>                 |
| Dance Club           | Ms. Moupali Roy         | Ph:9475627962  |

|                                       |                      |   |
|---------------------------------------|----------------------|---|
|                                       |                      | Email: <a href="mailto:moupali.roy@nit.ac.in">moupali.roy@nit.ac.in</a>                           |
| Environmental Education Society Club  | Dr. shilpi Pal       | Ph: 8910517242<br>Email: <a href="mailto:shilpi.pal@nit.ac.in">shilpi.pal@nit.ac.in</a>           |
| Community ConnectClub(NSS Activities) | Dr. Nikhilesh Sil    | Ph: 9830720155<br>Email: <a href="mailto:nikhilesh.sil@nit.ac.in">nikhilesh.sil@nit.ac.in</a>     |
| Event Coordination Club               | Ms. Tamashree Biswas | Ph: 9477356705<br>Email: <a href="mailto:tamasree.biswas@nit.ac.in">tamasree.biswas@nit.ac.in</a> |

Various activities are initiated by the above mentioned clubs , some of the activities that are initiated are mentioned below:

1. Workshops & Seminars
2. Annual Sports
3. Publication of magazine
4. Intra and Inter college academic competitions
5. Debates & Quizzes
6. Exhibitions
7. Industry Visits
8. Campus Beautification Program
9. Social Service
10. Intra and Inter college non-academic competitions

The Student Clubs inculcates strong values to its student body. They are highlighted below:

- Wishes to enhance the quality of life for students by promoting a safe, secure and environmentally conscious campus.
- strives for innovation and continuous improvement in all that we do to increase the level of service offered to students.
- Wants protection of intellectual freedom and an environment conducive to student discussion on all issues.

# *Annual Cultural and Sports Activities*

NiT organized many cultural and sports activities centrally organized throughout the year. Some of the grand/major cultural and sports events are as listed:

## **A. List of Cultural Events:**

| <b>Sl No.</b> | <b>Tentative date/month</b> | <b>Event Name</b>                          |
|---------------|-----------------------------|--|
| 1             | May-June                    | Farewell Program "BIDDING ADIEU 2019       |
| 2             | 15 <sup>th</sup> Aug, 2019  | Independence Day Celebration               |
| 3             | 17 <sup>th</sup> Aug, 2019  | NiT Foundation Day Celebration             |
| 4             | 5 <sup>th</sup> Sep, 2019   | Teachers Day Celebration                   |
| 5             | September                   | Freshers Welcome, Parichay 2k19            |
| 6             | 23 <sup>rd</sup> December   | Alumni Meet named as "Nostalgia"           |
| 7             | 24 <sup>th</sup> December   | Pre-Christmas Celebration                  |
| 8             | February                    | Inter School Winter Carnival named ECSTASY |
| 9             | March                       | The Cultural Fest: NAVODAYA 2020           |

## **B. List of Sports Events:**

| <b>Sl No.</b> | <b>Tentative date/month</b> | <b>Event Name</b>         |
|---------------|-----------------------------|---------------------------|
| 1             | January                     | Winter Camp Rock Climbing |
| 2             | 21 <sup>st</sup> June       | International Yoga Day    |
| 3             | February                    | Annual Sports Meet        |

However, there are many other small cultural/sports events organized at departmental levels in the institution.

## *Directory of NiT*

| Sectional Heads          | Name with Addresses  | Contact no. and emails   | Purpose                          |
|--------------------------|--|--|----------------------------------|
| Principal                | <p>Prof.(Dr) Maitreyi Ray<br/>(Kanjilal)</p> <p>Address: 81,Nilgunj Road,Agarpara,Kolkata-700109, West Bengal</p> <p><b>PA to Principal:</b><br/>Ms. Aparna Sarkar</p> | <p>Ph: <a href="tel:033-25637777">033-25637777</a> / <a href="tel:033-25837029">033-25837029</a></p> <p><b>Email:</b><br/><a href="mailto:principal_nit@jisgroup.org">principal_nit@jisgroup.org</a></p> <p>Ph: 8240950052<br/>Email:<br/><a href="mailto:pa_principal.nit@jisgroup.org">pa_principal.nit@jisgroup.org</a></p> | To Contact Principal Section     |
| Registrar                | Ms. Nidhi Singh  | <p>Ph: 8902496650</p> <p>Email:<br/><a href="mailto:nidhi.singh@jisgroup.org">nidhi.singh@jisgroup.org</a></p>   |                                  |
| Executive Administration | Ms. Punita Gaba  | <p>Ph:9883523233</p> <p>Email:<br/><a href="mailto:executive_admin.nit@jisgroup.org">executive_admin.nit@jisgroup.org</a></p>  |                                  |
| Admission                | <p>Mr. Subham Mal</p> <p>Mr. Kalyan Singha Roy</p>   | <p>Ph: 033 25638888/<br/>8902496651/ 6291977702</p> <p>Email: <a href="mailto:admission@nit.ac.in">admission@nit.ac.in</a></p>   | For Enquiry related to admission |
| Accounts                 | Mr. Debasish Das   | <p>Ph:8240177045/<br/>7872688808</p> <p>Email:</p>   | For Enquiry related to accounts  |

|   |  |   |   |
|---|--|---|---|
|   |  | <a href="mailto:accounts.nit@jisgroup.org">accounts.nit@jisgroup.org</a>  |   |
| Controller of Examination                 | <p>Prof. Amlan Chakraborty</p> <p><b>Assistant Controllers:</b></p> <p>Mr. Soumen Ghosh</p> <p>Mrs. Priyanjali Mukherjee</p> | <p>Ph: 9331219030</p> <p>Email: <a href="mailto:coe_nit@jisgroup.org">coe_nit@jisgroup.org</a></p> <p>Ph:9874873362</p> <p>Email: <a href="mailto:assistantcontroller_nit@jisgroup.org">assistantcontroller_nit@jisgroup.org</a></p> <p>Ph: 9163766068</p> <p>Email: <a href="mailto:priyanjali.mukherjee@nit.ac.in">priyanjali.mukherjee@nit.ac.in</a></p> | For Enquiry related to examination                  |
| Library                                   | Mrs. Medha Ray   | <p>Ph:7031805872</p> <p>Email: <a href="mailto:library@nit.ac.in">library@nit.ac.in</a></p>   | For Enquiry related to Issue of books               |
| Computer Science and Engineering          | Mr. Jayanta Pal  | <p>Ph: 9831686279</p> <p>Email: <a href="mailto:head_cse.nit@jisgroup.org">head_cse.nit@jisgroup.org</a></p>  | For Enquiry related to CSE Departmental activities. |
| Electronics and Communication Engineering | Dr. Saradindu Panda  | <p>Ph:9051820335</p> <p>Email: <a href="mailto:head_ece.nit@jisgroup.org">head_ece.nit@jisgroup.org</a></p>   | For Enquiry related to ECE Departmental activities. |
| Information Technology                    | Dr. Bidyut K Medya   | <p>Ph:9830160783</p> <p>Email: <a href="mailto:head_it.nit@jisgroup.org">head_it.nit@jisgroup.org</a></p>   | For Enquiry related to IT Departmental activities.  |
| Electrical Engineering                    | Dr. Nabamita Bannerjee   | <p>Ph:9477106164</p> <p>Email: <a href="mailto:head_ee.nit@jisgroup.org">head_ee.nit@jisgroup.org</a></p>   | For Enquiry related to EE Departmental activities.  |



|   |   |   |   |
|---|---|---|---|
| Civil Engineering                           | Prof. Dr. Biman Mukherjee   | Ph: 9836877000<br>Email:<br><a href="mailto:head_ce.nit@jisgroup.org">head_ce.nit@jisgroup.org</a>  | For Enquiry related to CE Departmental activities.    |
| Mechanical Engineering                      | Dr. Sumit Chabri  | Ph:9830363201<br>Email:<br><a href="mailto:head_me.nit@jisgroup.org">head_me.nit@jisgroup.org</a>   | For Enquiry related to ME Departmental activities.    |
| Electronics and Instrumentation Engineering | Prof. Bansari Deb Majumder  | Ph: 9903768390<br>Email:<br><a href="mailto:head_eie.nit@jisgroup.org">head_eie.nit@jisgroup.org</a>  | For Enquiry related to EIE Departmental activities.   |
| Basic Science and Humanities                | Dr. Sumit Nandi   | Ph:9830548335<br>Email:<br><a href="mailto:head_bs&amp;hu.nit@jisgroup.org">head_bs&amp;hu.nit@jisgroup.org</a>   | For Enquiry related to BS&HU Departmental activities. |
| In-charge of Hostels                        | Mr. Ratan Das   | Ph: 7003403637<br>Email:<br><a href="mailto:rkd.ratan@gmail.com">rkd.ratan@gmail.com</a>  | For Enquiry related to hostel                         |
| Diploma In-Charge                           | Dr. Bikash Panja<br><br><b>Sectional Co-ordinators</b><br><br>For ETCE<br>Prof. Soumen Pal<br><br>For EE<br>Prof. Dipu Mistry<br><br>For CE<br>Prof. Rajkumar Bannerjee | Ph: 9475970370<br>Email: <a href="mailto:incharge_diploma.nit@jisgroup.org">incharge_diploma.nit@jisgroup.org</a><br><br>Ph: 9775761452<br>Email:<br><a href="mailto:soumen.pal@nit.ac.in">soumen.pal@nit.ac.in</a><br><br>Ph: 9123646498<br>Email:<br><a href="mailto:dipu.mistry@nit.ac.in">dipu.mistry@nit.ac.in</a><br><br>Ph: 6289679528<br>Email:<br><a href="mailto:ban.rajkumar@nit.ac.in">ban.rajkumar@nit.ac.in</a> | For Enquiry related to Diploma Courses.               |

# Photo Gallery

